

Philips Business Monitor
Portable monitor

3000 series

16 (15.6"/39.6 cm diag.)
1920 x 1080 (Full HD)

16B1P3302D



Performance, adaptability, work on the go

This monitor is portable, lightweight and perfectly suited for improving workflow productivity when travelling. While on the road, the Dual USB-C feature facilitates sharing and presenting material or running a multi-screen setup.

Productivity on the go

- Dual USB-C: For ultimate connectivity
- Continuous tilt stand to fit your viewing needs
- Lightweight and foldable design for portability

Great performance

- IPS LED wide view technology for image and colour accuracy
- 16:9 Full HD display for crisp, detailed images
- SmartImage pre-sets for easy optimised image settings

Features designed for you

- LowBlue mode and Flicker-free easy-on-the eyes viewing
- EasyRead mode for a paper-like reading experience



reddot winner 2021

PHILIPS

Portable monitor
3000 series 16 (15.6"/39.6 cm diag.), 1920 x 1080 (Full HD)

16B1P3302D/00

Highlights

Dual USB-C

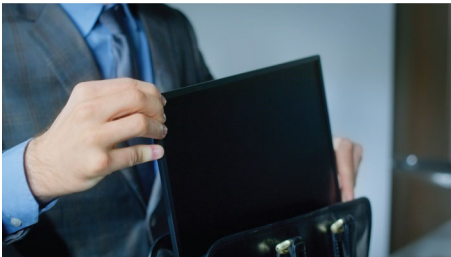
This feature is geared toward those who are looking for a product that facilitates productivity. This monitor showcases two ports on the side of the monitor where each USB-C cord can be plugged in and then used simultaneously for multiple purposes; such as, but not limited to: charging, presenting and as an add-on to a dual screen setup.

Multi-angle stand



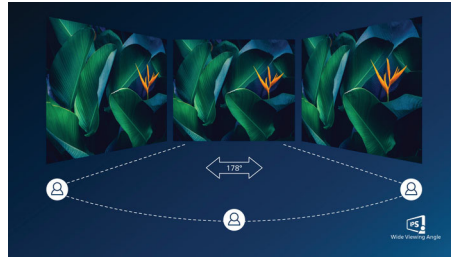
Our continuous tilt stand bends from 0 to 90 degrees with the kind of flexibility to allow you to get comfortable anywhere you need to keep up with your work.

Performance, adaptability



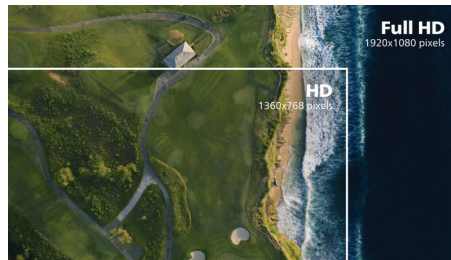
Enjoy a clean, portable, dual-screen workstation. The soft, smooth, pliable USB-C cable is designed to be easy to carry and fit in any bag.

IPS technology



IPS displays use an advanced technology that gives you extra-wide viewing angles of 178/178 degrees, making it possible to view the display from almost any angle. Unlike standard TN panels, IPS displays give you remarkably crisp images with vivid colours, making them ideal not only for Photos, movies and web browsing, but also for professional applications that demand colour accuracy and consistent brightness at all times.

16:9 Full HD display



Picture quality matters. Regular displays deliver quality, but you expect more. This display features enhanced Full HD 1920 x 1080 resolution. With Full HD for crisp detail paired with high brightness, incredible contrast and realistic colours, expect a true-to-life picture.

SmartImage



SmartImage is an exclusive leading edge Philips technology that analyses the content displayed

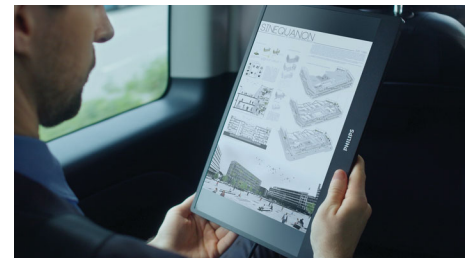
on your screen and optimises your display performance. This user-friendly interface allows you to select various modes, like Office, Photo, Movie, Game, Economy etc., to fit the application in use. Based on the selection, SmartImage dynamically optimises the contrast, colour saturation and sharpness of images and videos for ultimate display performance. The Economy mode option offers you major power savings. All in real time at the touch of a single button!

LowBlue Mode and Flicker-free



Our LowBlue Mode and Flicker-free technology have been developed to reduce eye strain and fatigue often caused by long hours in front of a monitor.

EasyRead mode



EasyRead mode for a paper-like reading experience



USB-C



Multi-angle Stand



Wide Viewing Angle



SmartImage™



LowBlue Mode



Flicker-free

Specifications

Picture/Display

- LCD panel type: IPS technology
- Backlight type: W-LED system
- Panel Size: 15.6 inch/39.6 cm
- Display Screen Coating: Anti-Glare, 3H, Haze 25%
- Effective viewing area: 344.16 (H) x 193.59 (V)
- Aspect ratio: 16:9
- Maximum resolution: 1920 x 1080 @ 75 Hz
- Pixel Density: 141 PPI
- Response time (typical): 4 ms (Grey to Grey)*
- Brightness: 250 cd/m²
- Contrast ratio (typical): 700:1
- SmartContrast: 50,000,000:1
- Pixel pitch: 0.17925 x 0.17925 mm
- Viewing angle: 170° (H)/170° (V), @ C/R > 10
- Flicker-free
- Picture enhancement: SmartImage
- Display colours: 16.2 M (6 bit + FRC)
- Colour gamut (typical): NTSC 46%*, sRGB 64%*
- Scanning Frequency: Landscape mode: 30-85 kHz (H)/48-75 Hz (V); Portrait mode: 30-150 kHz (H)/48-75 Hz (V)
- sRGB
- LowBlue Mode
- EasyRead

Connectivity

- Signal Input: USB-C x 2 (DP Alt mode, Data, Power delivery)
- HDCP: HDCP 1.4 (USB-C), HDCP 2.2 (USB-C)
- Audio (In/Out): Audio out
- Sync Input: Separate Sync

Power Delivery

- Version: PD version 3.0
- USB-C (input): Up to 90 W (5 V/3 A, 7 V/3 A, 9 V/3 A, 10 V/3 A, 12 V/3 A, 15 V/3 A, 20 V/4.5 A)
- USB-C (output): Up to 65 W (5 V/3 A, 7 V/3 A, 9 V/3 A, 10 V/3 A, 12 V/3 A, 15 V/3 A, 20 V/3.25 A)

Convenience

- User convenience: SmartImage, Input, Menu, Power On/Off
- Control software: SmartControl
- OSD Languages: Brazil Portuguese, Czech, Dutch, English, French, Finnish, German, Greek, Hungarian, Italian, Japanese, Korean, Portuguese, Polish, Russian, Simplified Chinese, Spanish, Swedish, Traditional Chinese, Turkish, Ukrainian
- Other convenience: VESA mount: Yes*
- Plug and Play Compatibility: DDC/CI, Mac OS X, sRGB, Windows 11/10/8.1/8

Stand

- Pivot: 90 degree
- Tilt: 0 ~ 90 degree

Power

- ECO mode: 4.4 W
- On mode: 6.2 W (EnergyStar test method)
- Standby mode: 0.5 W
- Off mode: 0.3 W
- Energy Label Class: C
- Power LED indicator: Operation - White, Standby mode - White (flashing)

Dimensions

- Product with stand (max height): 359 x 232 x 119 mm
- Packaging in mm (W x H x D): 404 x 281 x 103 mm

Weight

- Product with stand (kg): 1.03 kg
- Product with packaging (kg): 2.08 kg

Operating conditions

- Temperature range (operation): 0°C to 40 °C
- Temperature range (storage): -20°C to 60 °C
- Relative humidity: 20%-80 %
- Altitude: Operation: +12,000 ft (3658 m), Non-operation: +40,000 ft (12,192 m)
- MTBF (demonstrated): 70,000 hrs (excluded backlight)

Sustainability

- Environmental and energy: EnergyStar 8.0, EPEAT*, RoHS
- Recyclable packaging material: 100 %
- Post-consumer recycled plastic: 60%
- Specific Substances: Mercury free, PVC/BFR free housing

Compliance and standards

- Regulatory Approvals: CB, TUV/GS, TUV Ergo, CU-EAC, EAEU RoHS, CE Mark, FCC Class B, ICES-003, cETLus

Cabinet

- Front bezel: Black
- Rear cover: Black
- Foot: Black
- Finish: Texture

What's in the box?

- Monitor with stand
- Cables: USB-C to C/A Y cable
- User Documentation
- Accessory: Protective case



Issue date 2023-01-06

Version: 1.3.1

12 NC: 8670 001 86788
EAN: 87 12581 79952 6

© 2023 Koninklijke Philips N.V.
All Rights reserved.

Specifications are subject to change without notice.
Trademarks are the property of Koninklijke Philips N.V.
or their respective owners.

www.philips.com

* Response time value equal to SmartResponse

* NTSC Area based on CIE 1976

* sRGB Coverage based on CIE1931

* For Video transmission via USB-C, your Notebook/device must support USB-C DP Alt mode

* For USB-C power and charging function, your Notebook/device must support USB-C standard Power Delivery specifications. Please check with your Notebook user manual or manufacturer for more details.

* This monitor is powered through the USB port. Please refer to user manual for more information.

* For VESA mounts, please refer to "VESA Mounting" in user manual for more information.

* EPEAT rating is valid only where Philips registers the product. Please visit <https://www.epeat.net/> for registration status in your country.

* The monitor may look different from feature images.