




Dell Latitude 3440 Owner's Manual

Regulatory Model: P37G
Regulatory Type: P37G004



Notes, Cautions, and Warnings

-  **NOTE:** A NOTE indicates important information that helps you make better use of your computer.
-  **CAUTION:** A CAUTION indicates either potential damage to hardware or loss of data and tells you how to avoid the problem.
-  **WARNING:** A WARNING indicates a potential for property damage, personal injury, or death.

© 2013 Dell Inc. All Rights Reserved.

Trademarks used in this text: Dell™, the DELL logo, Dell Precision™, Precision ON™, ExpressCharge™, Latitude™, Latitude ON™, OptiPlex™, Venue™, Vostro™, and Wi-Fi Catcher™ are trademarks of Dell Inc. Intel®, Pentium®, Xeon®, Core™, Atom™, Centrino®, and Celeron® are registered trademarks or trademarks of Intel Corporation in the U.S. and other countries. AMD® is a registered trademark and AMD Opteron™, AMD Phenom™, AMD Sempron™, AMD Athlon™, ATI Radeon™, and ATI FirePro™ are trademarks of Advanced Micro Devices, Inc. Microsoft®, Windows®, MS-DOS®, Windows Vista®, the Windows Vista start button, and Office Outlook® are either trademarks or registered trademarks of Microsoft Corporation in the United States and/or other countries. Blu-ray Disc™ is a trademark owned by the Blu-ray Disc Association (BDA) and licensed for use on discs and players. The Bluetooth® word mark is a registered trademark and owned by the Bluetooth® SIG, Inc. and any use of such mark by Dell Inc. is under license. Wi-Fi® is a registered trademark of Wireless Ethernet Compatibility Alliance, Inc.

2013 - 09

Rev. A00

Contents

1 Working on Your Computer.....	5
Before Working Inside Your Computer.....	5
Turning Off Your Computer.....	6
After Working Inside Your Computer.....	7
2 Removing and Installing Components.....	9
System Overview.....	9
Recommended Tools.....	10
Removing the SD Card.....	10
Installing the SD Card.....	11
Removing the Battery.....	11
Installing the Battery.....	12
Removing the Access Panel.....	12
Installing the Access Panel.....	14
Removing the Memory Module.....	14
Installing the Memory Module.....	14
Removing the Hard Drive.....	14
Installing the Hard Drive.....	16
Removing the Optical Drive.....	16
Installing the Optical Drive.....	17
Removing the Keyboard.....	17
Installing the Keyboard.....	19
Removing the WLAN Card.....	19
Installing the WLAN Card.....	20
Removing the Palmrest.....	20
Installing the Palmrest.....	23
Removing the I/O Board.....	23
Installing the I/O Board.....	24
Removing the Coin-Cell Battery.....	24
Installing the Coin-Cell Battery.....	24
Removing the System Board.....	25
Installing the System Board.....	27
Removing the Heatsink Assembly.....	27
Installing the Heatsink Assembly.....	28
Removing the Speakers.....	28
Installing the Speakers.....	29
Removing the Display Assembly.....	30
Installing the Display Assembly.....	31


Removing the Display Bezel.....	31
Installing the Display Bezel.....	33
Removing the Display Panel.....	33
Installing the Display Panel.....	34
Removing the Display Hinges.....	35
Installing the Display Hinges.....	36
Removing the Camera Module.....	36
Installing the Camera Module.....	38
3 System Setup.....	39
Boot Sequence.....	39
Navigation Keys.....	39
System Setup Options.....	40
Updating the BIOS	43
System and Setup Password.....	43
Assigning a System Password and Setup Password.....	44
Deleting or Changing an Existing System and/or Setup Password.....	44
4 Diagnostics.....	47
Enhanced Pre-Boot System Assessment (ePSA) Diagnostics.....	47
Device Status Lights.....	47
Battery Status Lights.....	48
5 Specifications.....	49
6 Contacting Dell.....	55


Working on Your Computer

Before Working Inside Your Computer


Use the following safety guidelines to help protect your computer from potential damage and to help to ensure your personal safety. Unless otherwise noted, each procedure included in this document assumes that the following conditions exist:


- You have performed the steps in Working on Your Computer.
- You have read the safety information that shipped with your computer.
- A component can be replaced or--if purchased separately--installed by performing the removal procedure in reverse order.


 **WARNING:** Before working inside your computer, read the safety information that shipped with your computer. For additional safety best practices information, see the Regulatory Compliance Homepage at www.dell.com/regulatory_compliance

 **CAUTION:** Many repairs may only be done by a certified service technician. You should only perform troubleshooting and simple repairs as authorized in your product documentation, or as directed by the online or telephone service and support team. Damage due to servicing that is not authorized by Dell is not covered by your warranty. Read and follow the safety instructions that came with the product.

 **CAUTION:** To avoid electrostatic discharge, ground yourself by using a wrist grounding strap or by periodically touching an unpainted metal surface, such as a connector on the back of the computer.

 **CAUTION:** Handle components and cards with care. Do not touch the components or contacts on a card. Hold a card by its edges or by its metal mounting bracket. Hold a component such as a processor by its edges, not by its pins.

 **CAUTION:** When you disconnect a cable, pull on its connector or on its pull-tab, not on the cable itself. Some cables have connectors with locking tabs; if you are disconnecting this type of cable, press in on the locking tabs before you disconnect the cable. As you pull connectors apart, keep them evenly aligned to avoid bending any connector pins. Also, before you connect a cable, ensure that both connectors are correctly oriented and aligned.

 **NOTE:** The color of your computer and certain components may appear differently than shown in this document.


To avoid damaging your computer, perform the following steps before you begin working inside the computer.

1. Ensure that your work surface is flat and clean to prevent the computer cover from being scratched.
2. Turn off your computer (see [Turning Off Your Computer](#)).
3. If the computer is connected to a docking device (docked) such as the optional Media Base or Battery Slice, undock it.

 **CAUTION:** To disconnect a network cable, first unplug the cable from your computer and then unplug the cable from the network device.


4. Disconnect all network cables from the computer.
5. Disconnect your computer and all attached devices from their electrical outlets.

6. Close the display and turn the computer upside-down on a flat work surface.

 **NOTE:** To avoid damaging the system board, you must remove the main battery before you service the computer.

7. Remove the main battery.
8. Turn the computer top-side up.
9. Open the display.
10. Press the power button to ground the system board.




 **CAUTION:** To guard against electrical shock, always unplug your computer from the electrical outlet before opening the display.

 **CAUTION:** Before touching anything inside your computer, ground yourself by touching an unpainted metal surface, such as the metal at the back of the computer. While you work, periodically touch an unpainted metal surface to dissipate static electricity, which could harm internal components.

11. Remove any installed ExpressCards or Smart Cards from the appropriate slots.

Turning Off Your Computer

 **CAUTION:** To avoid losing data, save and close all open files and exit all open programs before you turn off your computer.

1. Shut down the operating system:
 - In Windows 8:
 - * Using a touch-enabled device:
 - a. Swipe in from the right edge of the screen, opening the Charms menu and select **Settings**.
 - b. Select the  and then select **Shut down**
 - * Using a mouse:
 - a. Point to upper-right corner of the screen and click **Settings**.
 - b. Click the  and select **Shut down**.
 - In Windows 7:
 1. Click **Start** .
 2. Click **Shut Down**.

or

1. Click **Start** .
2. Click the arrow in the lower-right corner of the **Start** menu as shown below, and then click **Shut**




Down..

2. Ensure that the computer and all attached devices are turned off. If your computer and attached devices did not automatically turn off when you shut down your operating system, press and hold the power button for about 4 seconds to turn them off.

After Working Inside Your Computer

After you complete any replacement procedure, ensure you connect any external devices, cards, and cables before turning on your computer.

 **CAUTION: To avoid damage to the computer, use only the battery designed for this particular Dell computer. Do not use batteries designed for other Dell computers.**

1. Connect any external devices, such as a port replicator, battery slice, or media base, and replace any cards, such as an ExpressCard.
2. Connect any telephone or network cables to your computer.

 **CAUTION: To connect a network cable, first plug the cable into the network device and then plug it into the computer.**

3. Replace the battery.
4. Connect your computer and all attached devices to their electrical outlets.
5. Turn on your computer.

Removing and Installing Components

This section provides detailed information on how to remove or install the components from your computer.

System Overview

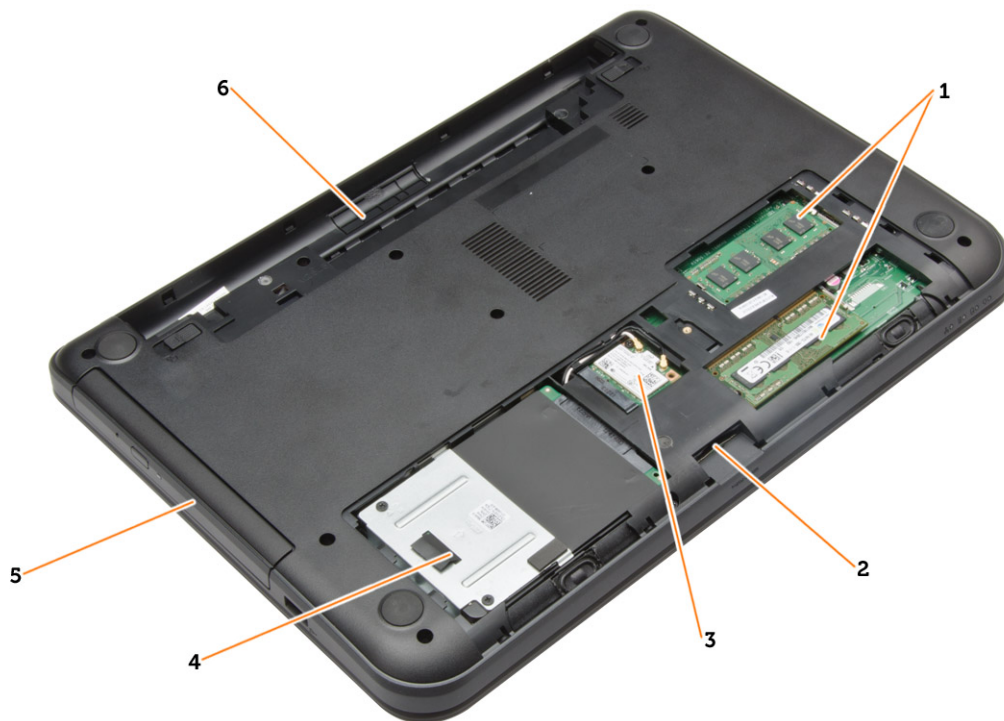


Figure 1. Inside View — Back

- | | |
|-------------------|------------------|
| 1. memory modules | 5. optical drive |
| 2. SD card slot | 6. battery bay |
| 3. WLAN card | |
| 4. hard drive | |

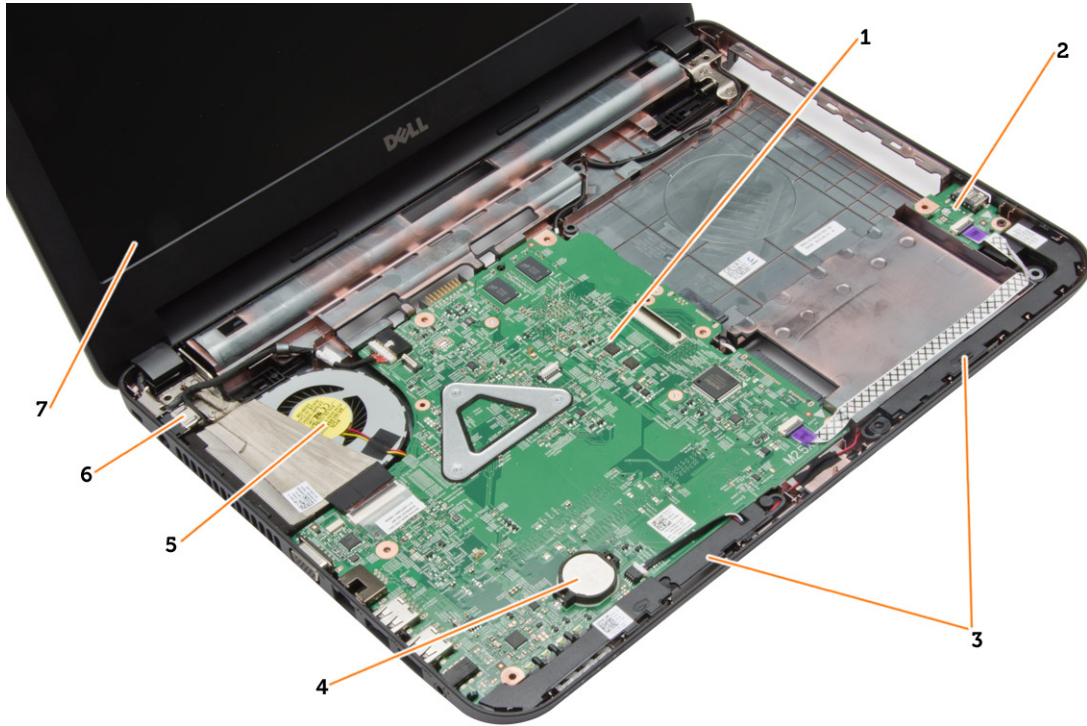


Figure 2. Inside view — Front

- | | |
|----------------------|-----------------------|
| 1. system board | 5. heat sink assembly |
| 2. I/O board | 6. power connector |
| 3. speakers | 7. display |
| 4. coin-cell battery | |

Recommended Tools

The procedures in this document may require the following tools:

- Small flat-blade screwdriver
- #0 Phillips screwdriver
- #1 Phillips screwdriver
- Small plastic scribe
- Flash BIOS update program CD

Removing the SD Card

1. Follow the procedures in *Before Working Inside Your Computer*.
2. Press in on the SD memory card to release it from the computer.



Installing the SD Card

1. Push the memory card into the compartment until it clicks into place.
2. Follow the procedures in *After Working Inside Your Computer*.

Removing the Battery

1. Follow the procedures in *Before Working Inside Your Computer*.
2. Slide the release latches outwards to unlock the battery.



3. Lift the battery to remove it from the computer.

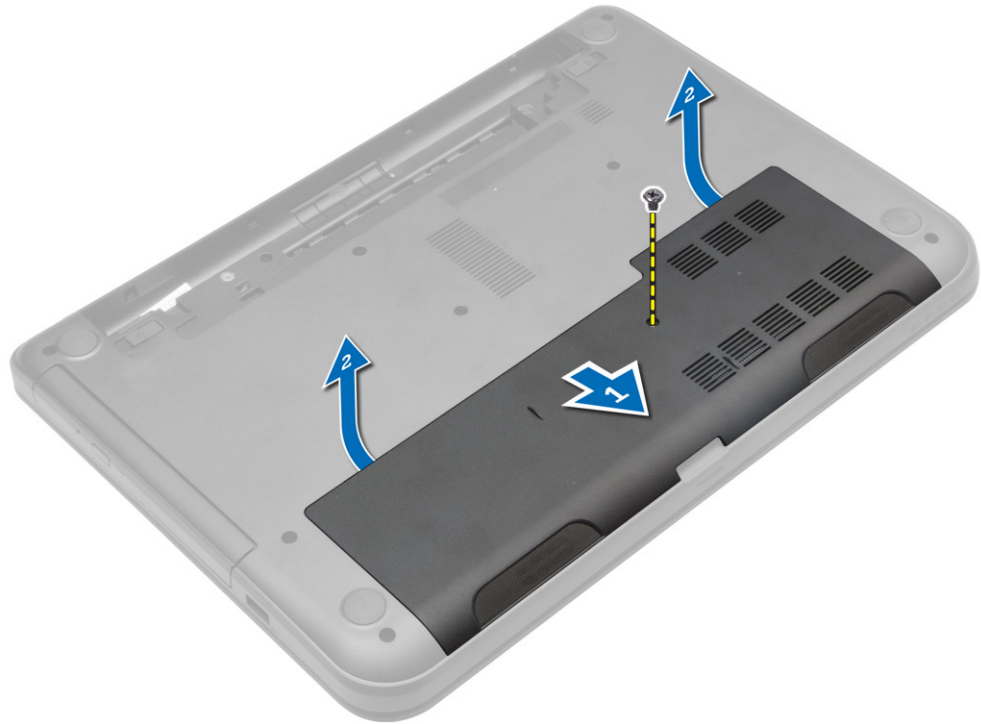


Installing the Battery

1. Slide the battery into its slot until it clicks into place.
2. Follow the procedures in *After Working Inside Your Computer*.

Removing the Access Panel

1. Follow the procedures in *Before Working Inside Your Computer*.
2. Remove:
 - a) battery
 - b) SD card
3. Remove the screw that secures the access panel.



4. Lift the access panel to remove from the computer.

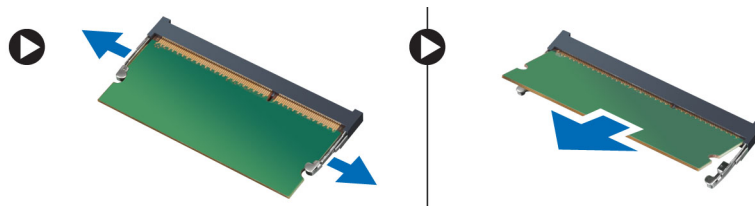


Installing the Access Panel

1. Slide the access panel into its slot.
2. Tighten the screw to secure the access panel to the computer.
3. Install:
 - a) battery
 - b) SD card
4. Follow the procedures in *After Working Inside Your Computer*.

Removing the Memory Module

1. Follow the procedures in *Before Working Inside Your Computer*.
2. Remove:
 - a) battery
 - b) SD card
 - c) access panel
3. Pry the securing clips away from the memory module until it pops up. Remove the memory module from its socket on the system board.

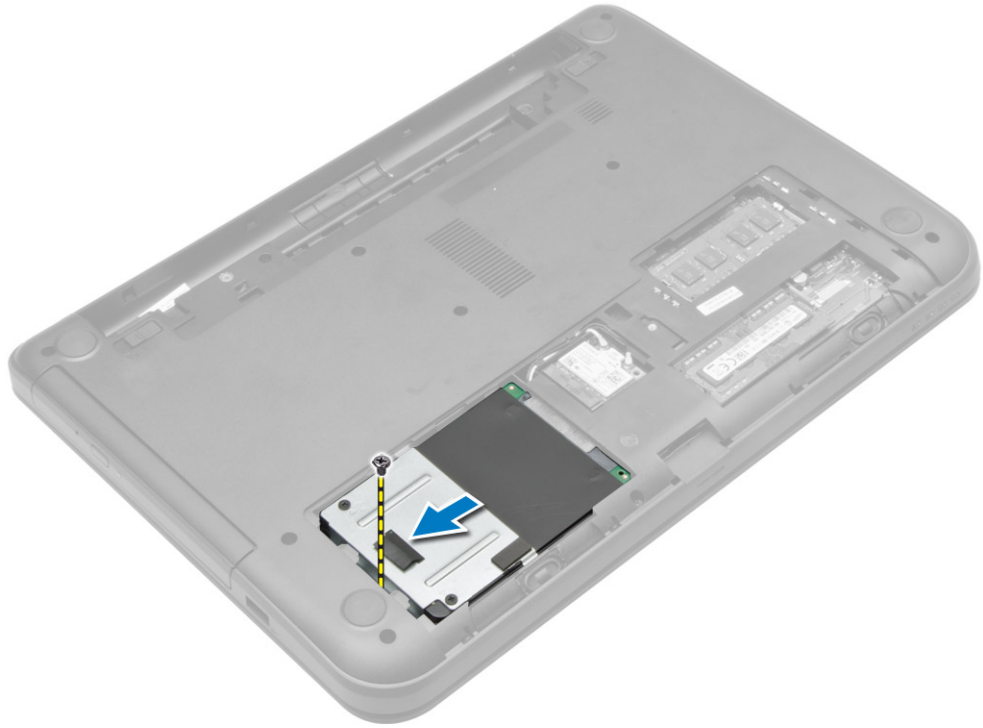


Installing the Memory Module

1. Insert the memory module into the memory socket and press until it clicks into place.
2. Install:
 - a) access panel
 - b) SD card
 - c) battery
3. Follow the procedures in *After Working Inside Your Computer*.

Removing the Hard Drive

1. Follow the procedures in *Before Working Inside Your Computer*.
2. Remove:
 - a) battery
 - b) SD card
 - c) access panel
3. Remove the screw that secures the hard drive and slide the hard drive to disconnect it from the connectors.



4. Lift the tab to remove it from the computer.



Installing the Hard Drive

1. Slide the hard drive in to its slot in the computer.
2. Tighten the screw to secure the hard drive to the computer.
3. Install:
 - a) access panel
 - b) SD card
 - c) battery
4. Follow the procedures in *After Working Inside Your Computer*.

Removing the Optical Drive

1. Follow the procedures in *Before Working Inside Your Computer*.
2. Remove the battery.
3. Remove the screw that secures the optical drive and slide the optical drive out of the drive bay.



4. Remove the screw that secures the optical-drive bracket to the optical drive and remove it.



Installing the Optical Drive

1. Place the optical-drive bracket on to the optical drive.
2. Tighten the screws to secure the optical-drive bracket to the optical drive.
3. Slide the optical drive into the drive bay in the computer.
4. Tighten the screw to secure the optical drive to the computer.
5. Install the battery.
6. Follow the procedures in *After Working Inside Your Computer*.

Removing the Keyboard

1. Follow the procedures in *Before Working Inside Your Computer*.
2. Remove the battery.
3. Remove the screws from the back of the computer.



4. Release the keyboard by pressing the tabs on the palmrest assembly. Slide the keyboard towards the display assembly to access the keyboard cable.



5. Disconnect the keyboard cable from the system board and lift it up to remove it from the computer.

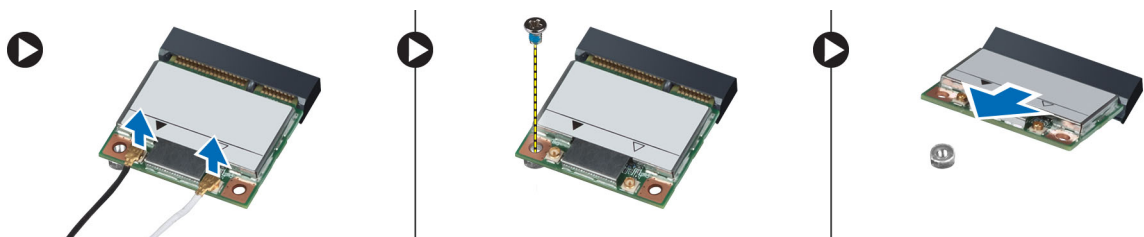


Installing the Keyboard

1. Connect the keyboard cable to its connector on the system board.
2. Slide the keyboard in its place on the computer and snap it into place.
3. Flip the computer and tighten the screws to secure the keyboard to the computer.
4. Install the battery.
5. Follow the procedures in *After Working Inside Your Computer*.

Removing the WLAN Card

1. Follow the procedures in *Before Working Inside Your Computer*.
2. Remove:
 - a) battery
 - b) access panel
3. Disconnect the antennae cables from the card, remove the screw and remove the WLAN card from its slot on the system board.

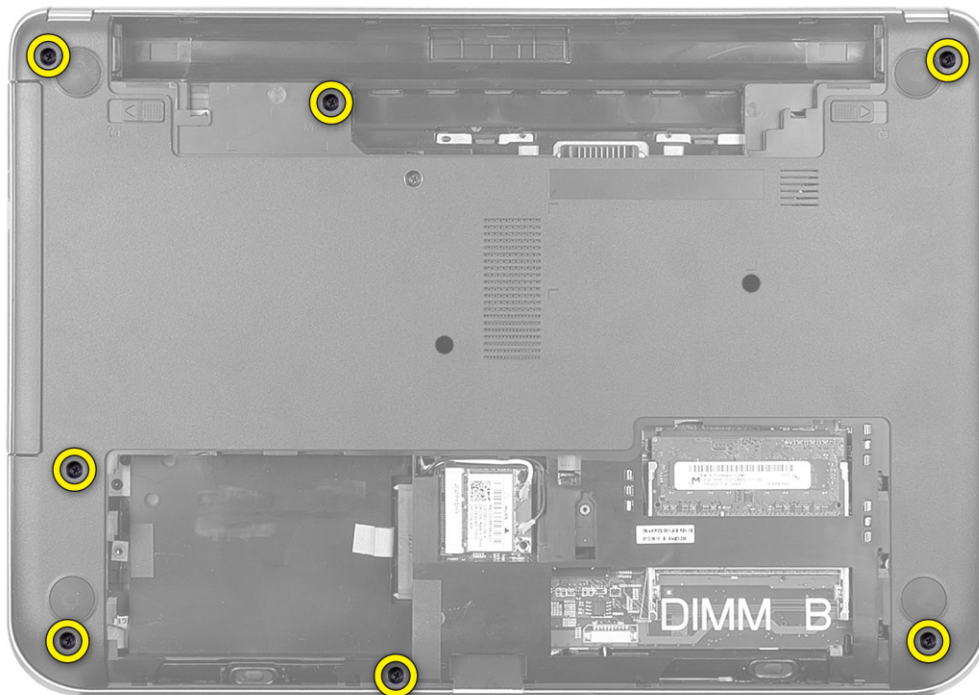


Installing the WLAN Card

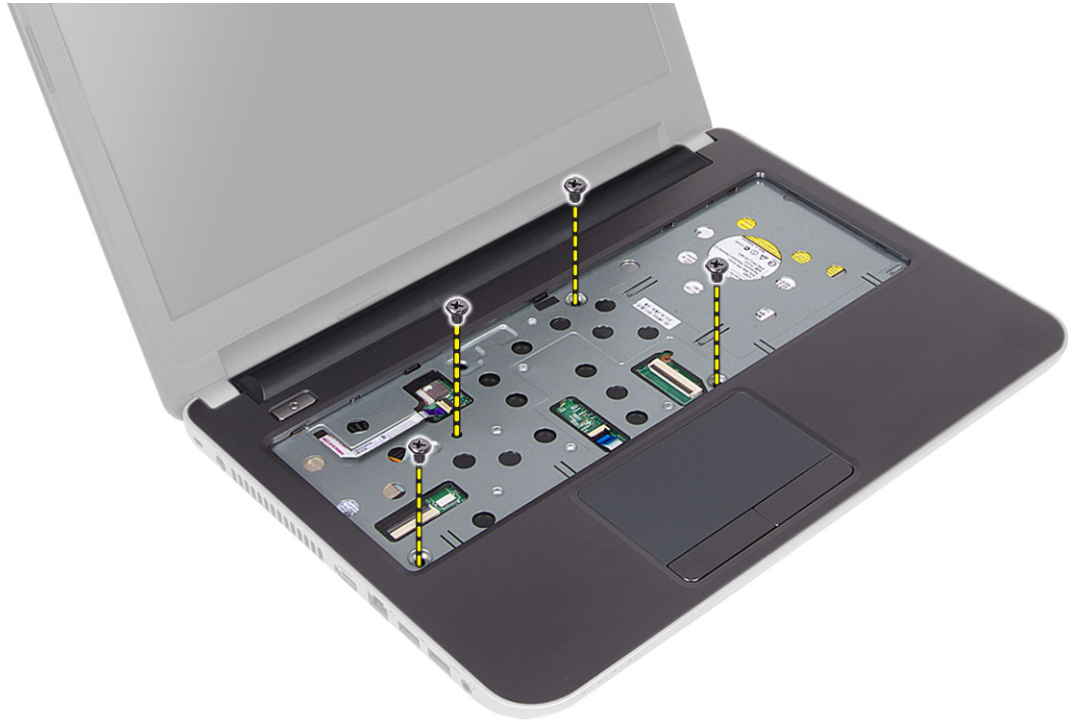
1. Insert the WLAN card into its slot.
2. Press down the WLAN card and tighten the screw to secure the WLAN card to the computer.
3. Connect the antenna cables to their respective connectors marked on the WLAN card.
4. Install:
 - a) access panel
 - b) battery
5. Follow the procedures in *After Working Inside Your Computer*.

Removing the Palmrest

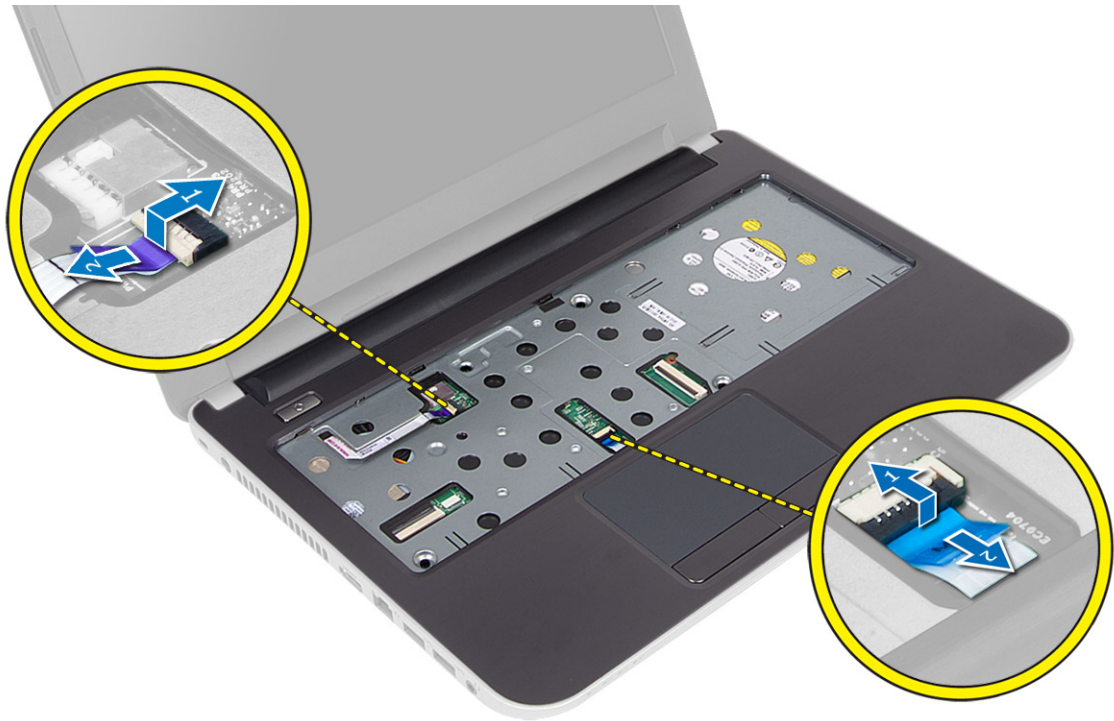
1. Follow the procedures in *Before Working Inside Your Computer*.
2. Remove:
 - a) battery
 - b) SD card
 - c) access panel
 - d) keyboard
3. Remove the screws that secure the palmrest to the computer.



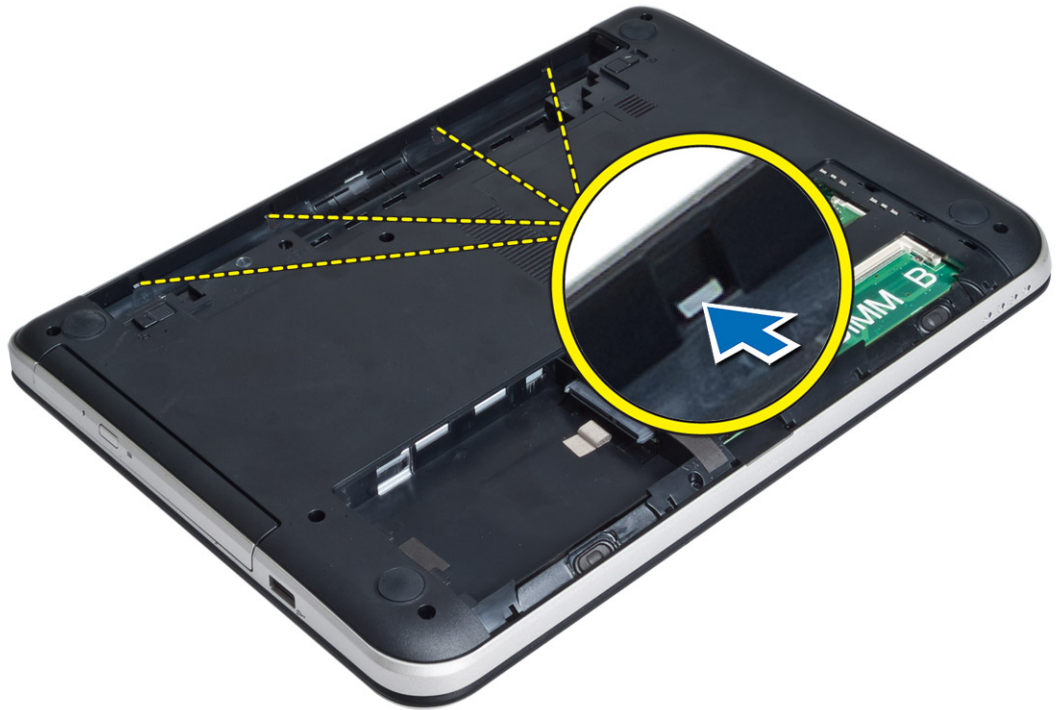
4. Flip the computer and remove the screws that secure the palmrest to the system board.



5. Disconnect the touchpad and power-button cable from the system board.



6. Flip the computer and push the hooks inside the battery bay to release the palmrest.



7. Flip the computer and release the tabs on the sides to lift the palmrest from the computer.

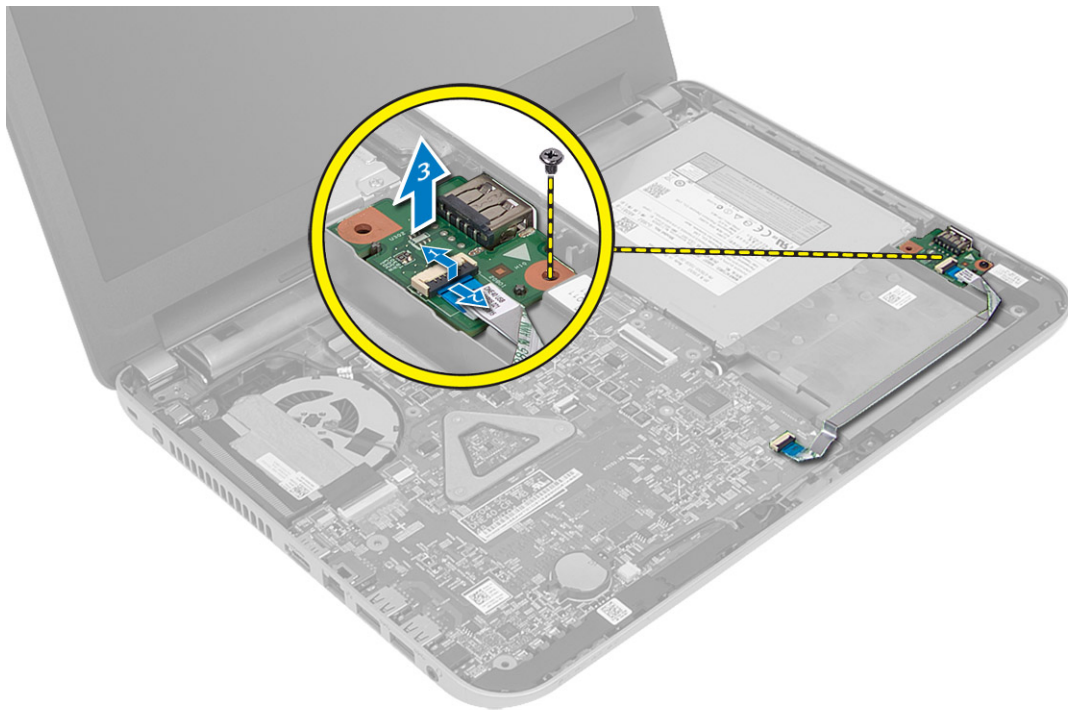


Installing the Palmrest

1. Align and press the palmrest on the computer until it snaps into place on all the sides.
2. Connect the touchpad and power-button cables to the system board.
3. Tighten the screws to secure the palmrest to the system board.
4. Flip the computer and tighten the screws to secure the palmrest to the computer.
5. Install:
 - a) keyboard
 - b) access panel
 - c) SD card
 - d) battery
6. Follow the procedures in *After Working Inside Your Computer*.

Removing the I/O Board

1. Follow the procedures in *Before Working Inside Your Computer*.
2. Remove:
 - a) battery
 - b) SD card
 - c) access panel
 - d) keyboard
 - e) palmrest
3. Disconnect the I/O cable, remove the screw that secures the I/O board to the computer, and lift the I/O board to remove it from the computer.

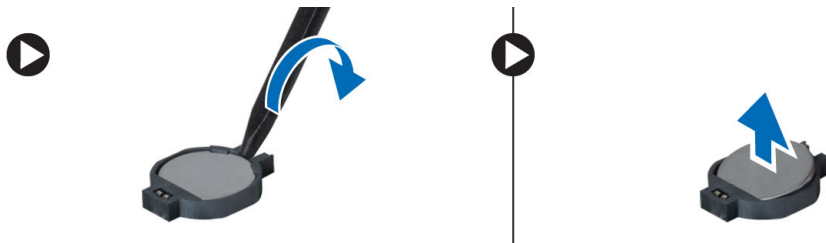


Installing the I/O Board

1. Place the I/O board in its slot.
2. Tighten the screw to secure the I/O board to the computer.
3. Connect the I/O cable to the I/O board.
4. Install:
 - a) palmrest
 - b) keyboard
 - c) access panel
 - d) SD card
 - e) battery
5. Follow the procedures in *After Working Inside Your Computer*.

Removing the Coin-Cell Battery

1. Follow the procedures in *Before Working Inside Your Computer*.
2. Remove:
 - a) battery
 - b) SD card
 - c) access panel
 - d) keyboard
 - e) palmrest
3. Pry out the coin-cell battery from the system board.

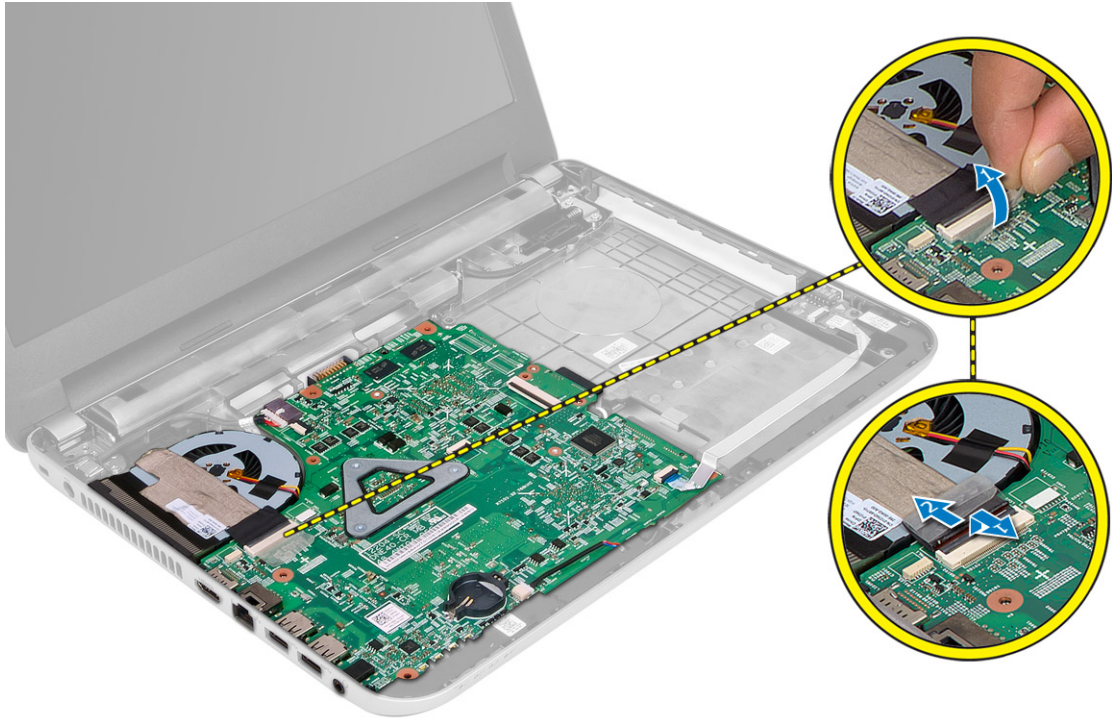


Installing the Coin-Cell Battery

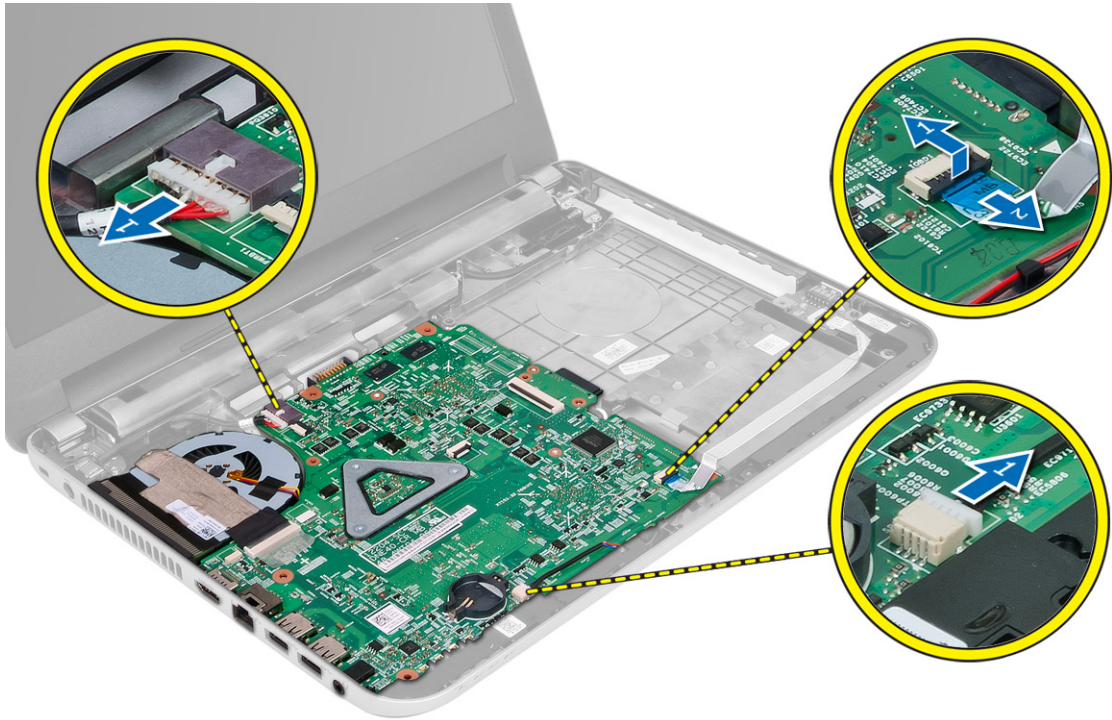
1. Place the coin-cell battery in its slot.
2. Install:
 - a) palmrest
 - b) keyboard
 - c) access panel
 - d) SD card
 - e) battery
3. Follow the procedures in *After Working Inside Your Computer*.

Removing the System Board

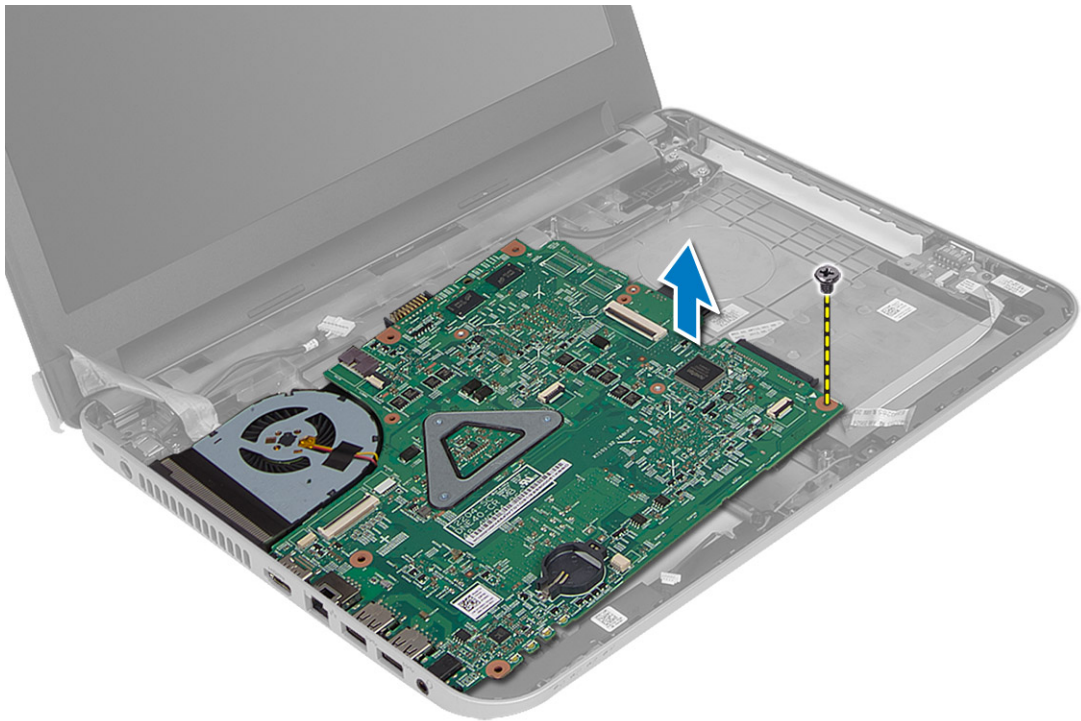
1. Follow the procedures in *Before Working Inside Your Computer*.
2. Remove:
 - a) battery
 - b) SD card
 - c) access panel
 - d) memory module
 - e) WLAN card
 - f) hard drive
 - g) optical drive
 - h) keyboard
 - i) palmrest
 - j) coin-cell battery
3. Peel the tape that secures the display cable to the system board and disconnect the display cable.



4. Disconnect the following cables:
 - a) DC-In Port
 - b) speaker
 - c) I/O board



5. Remove the screw that secures the system board to the computer and lift the system board from the computer.

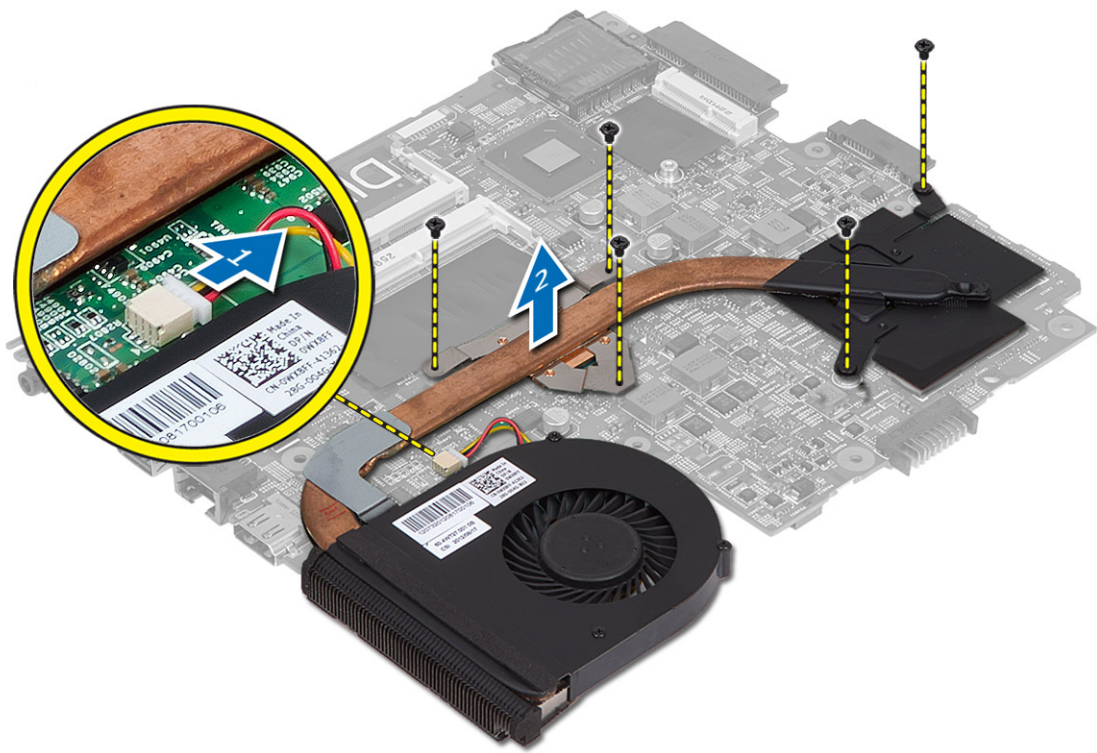


Installing the System Board

1. Align the system board in its place on the computer.
2. Tighten the screw to secure the system board to the computer.
3. Connect the following cables:
 - a) display
 - b) DC-In Port
 - c) speaker
 - d) I/O board
4. Affix the tape to secure the display cable to the system board.
5. Install:
 - a) coin-cell battery
 - b) palmrest
 - c) keyboard
 - d) optical drive
 - e) hard drive
 - f) memory module
 - g) WLAN card
 - h) access panel
 - i) SD card
 - j) battery
6. Follow the procedures in *After Working Inside Your Computer*.

Removing the Heatsink Assembly

1. Follow the procedures in *Before Working Inside Your Computer*.
2. Remove:
 - a) battery
 - b) SD card
 - c) access panel
 - d) memory module
 - e) WLAN card
 - f) hard drive
 - g) optical drive
 - h) keyboard
 - i) palmrest
 - j) system board
3. Flip the system board and place it on a flat surface.
4. Disconnect fan cable and remove the screws that secure the heatsink assembly to the system board. Lift the heatsink assembly from the system board.



Installing the Heatsink Assembly

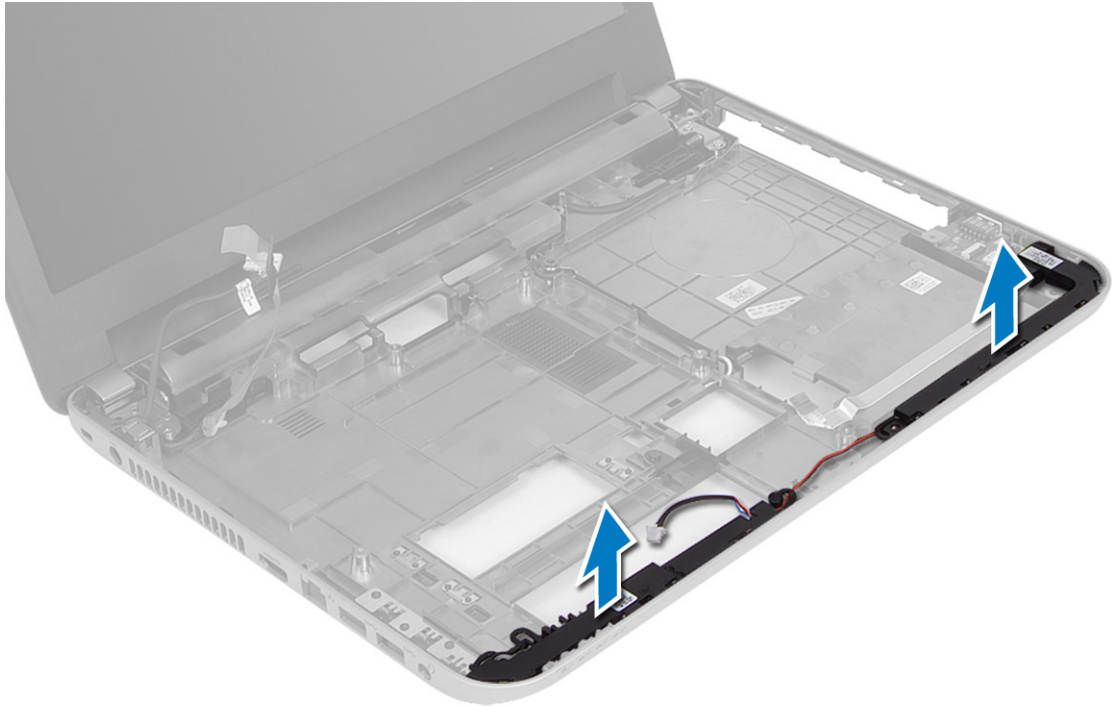
1. Align the heatsink assembly in its place on the system board.
2. Tighten the screws to secure the heatsink assembly to the system board.
3. Install:
 - a) system board
 - b) palmrest
 - c) keyboard
 - d) optical drive
 - e) hard drive
 - f) memory module
 - g) WLAN card
 - h) access panel
 - i) SD card
 - j) battery
4. Follow the procedures in *After Working Inside Your Computer*.

Removing the Speakers

1. Follow the procedures in *Before Working Inside Your Computer*.
2. Remove:
 - a) battery

- b) SD card
- c) access panel
- d) memory module
- e) WLAN card
- f) hard drive
- g) optical drive
- h) keyboard
- i) palmrest
- j) system board

3. Unroute the speaker cable from its routing channel and lift the speakers from the computer.

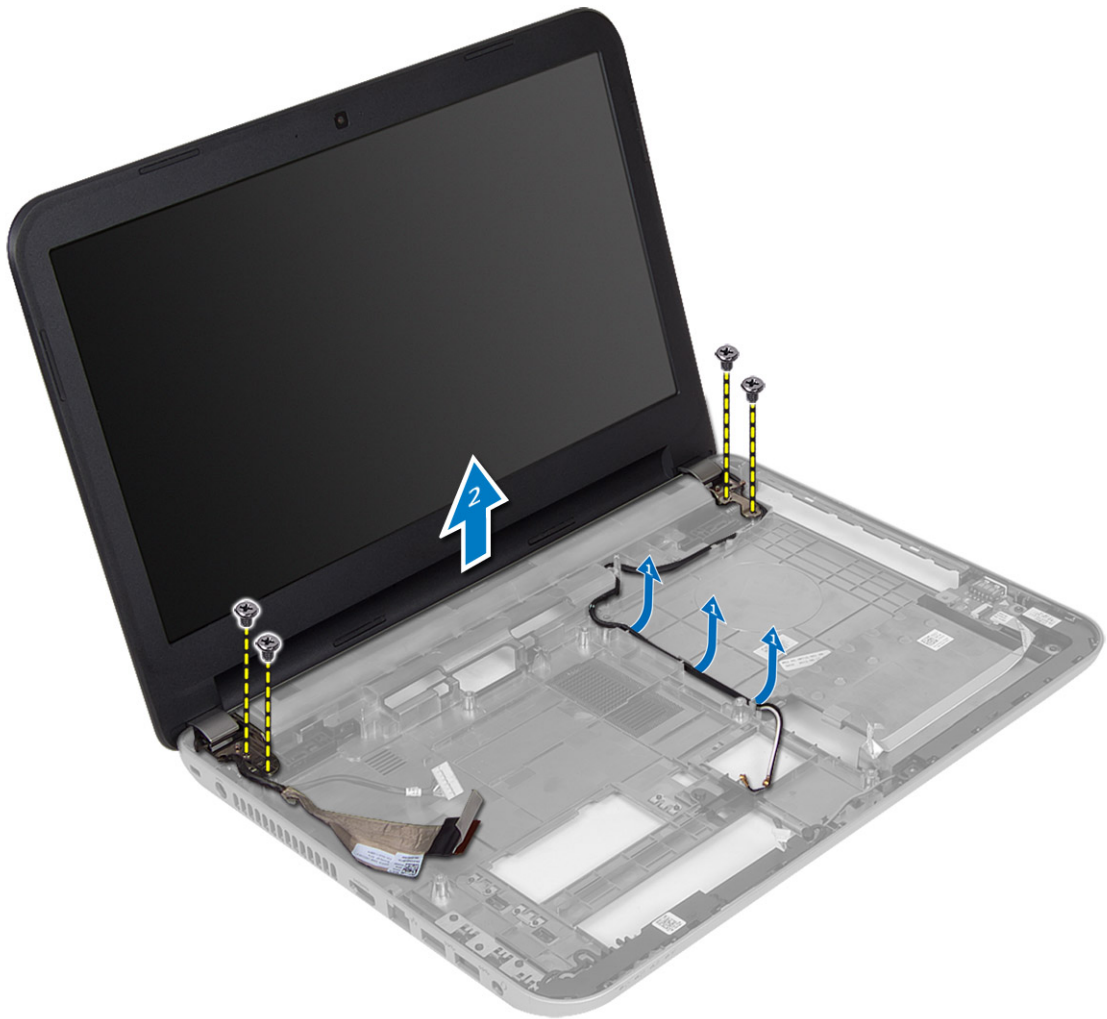


Installing the Speakers

1. Place the speakers on to its slot and route the cables through the channels.
2. Install:
 - a) system board
 - b) palmrest
 - c) keyboard
 - d) optical drive
 - e) hard drive
 - f) memory module
 - g) WLAN card
 - h) access panel
 - i) SD card
 - j) battery
3. Follow the procedures in *After Working Inside Your Computer*.

Removing the Display Assembly

1. Follow the procedures in *Before Working Inside Your Computer*.
2. Remove:
 - a) battery
 - b) SD card
 - c) access panel
 - d) memory module
 - e) WLAN card
 - f) hard drive
 - g) optical drive
 - h) keyboard
 - i) palmrest
 - j) system board
3. Unroute the display and WLAN antenna cables from their routing channels.
4. Remove the screws that secure the display assembly to the computer.



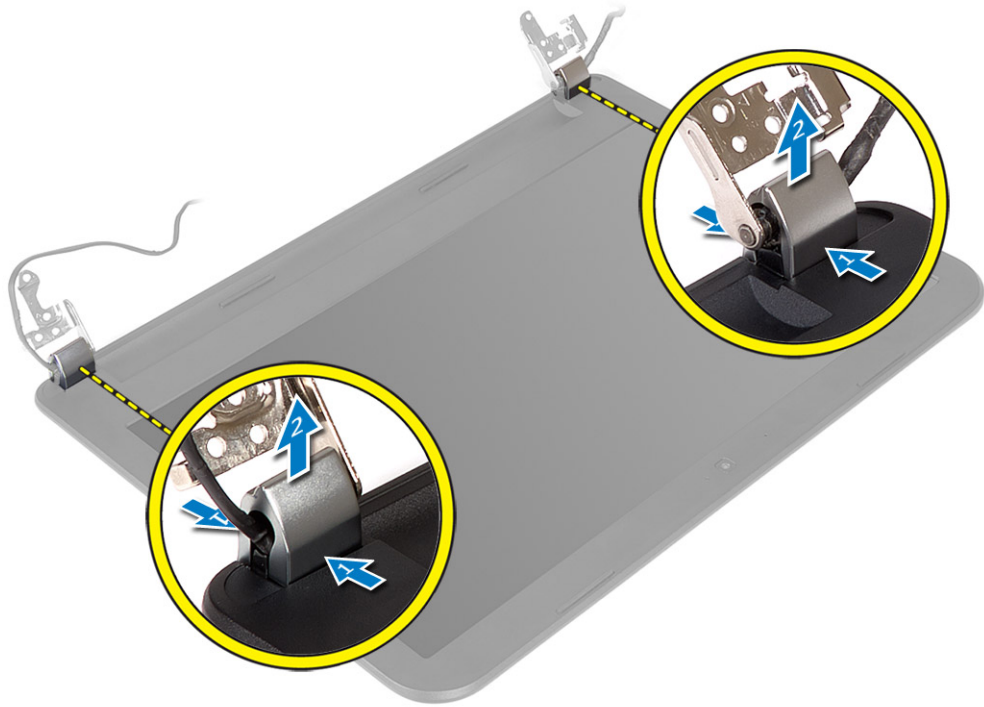
5. Lift and remove the display assembly from the computer.

Installing the Display Assembly

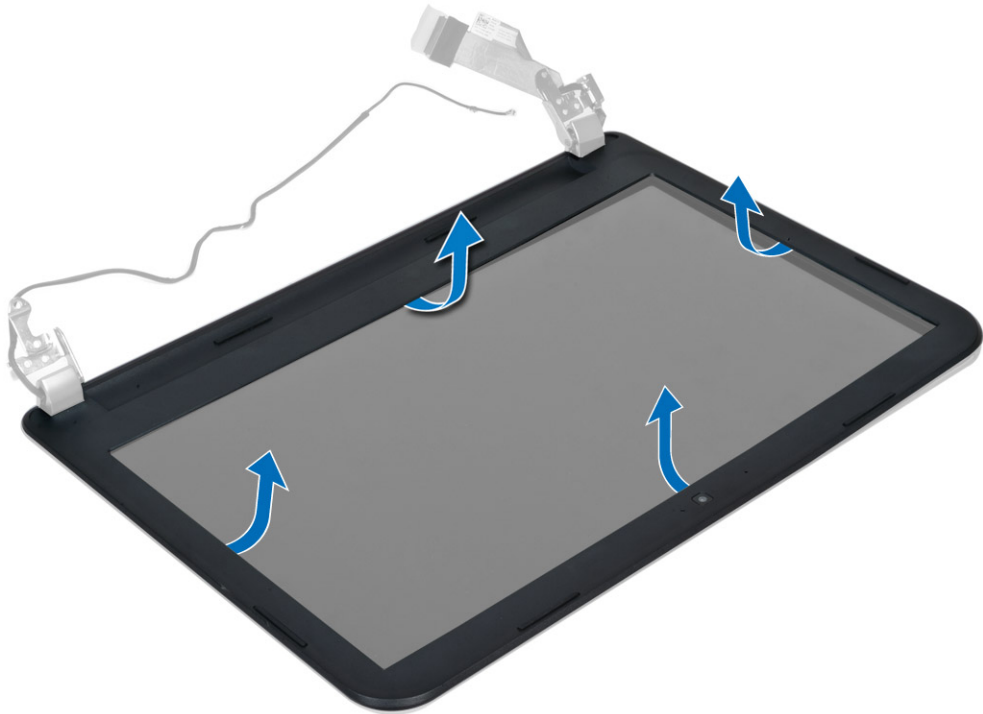
1. Place the display assembly on the computer.
2. Tighten the screws to secure the display assembly.
3. Route the display and WLAN antenna cables to their channels.
4. Install:
 - a) system board
 - b) palmrest
 - c) keyboard
 - d) optical drive
 - e) hard drive
 - f) memory module
 - g) WLAN card
 - h) access panel
 - i) SD card
 - j) battery
5. Follow the procedures in *After Working Inside Your Computer*.

Removing the Display Bezel

1. Follow the procedures in *Before Working Inside Your Computer*.
2. Remove:
 - a) battery
 - b) SD card
 - c) access panel
 - d) memory module
 - e) WLAN card
 - f) hard drive
 - g) optical drive
 - h) keyboard
 - i) palmrest
 - j) system board
 - k) display assembly
3. Press the hinge covers on the side. Lift and remove the hinge covers from the computer.



4. Pry the edges of the display bezel. Remove the display bezel from the computer.

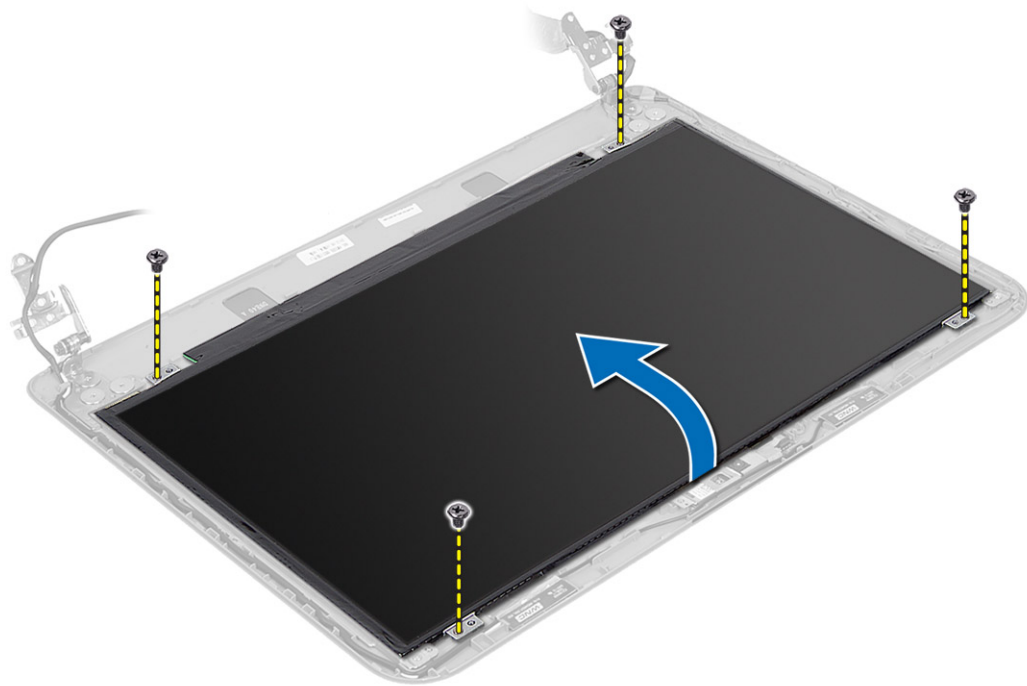


Installing the Display Bezel

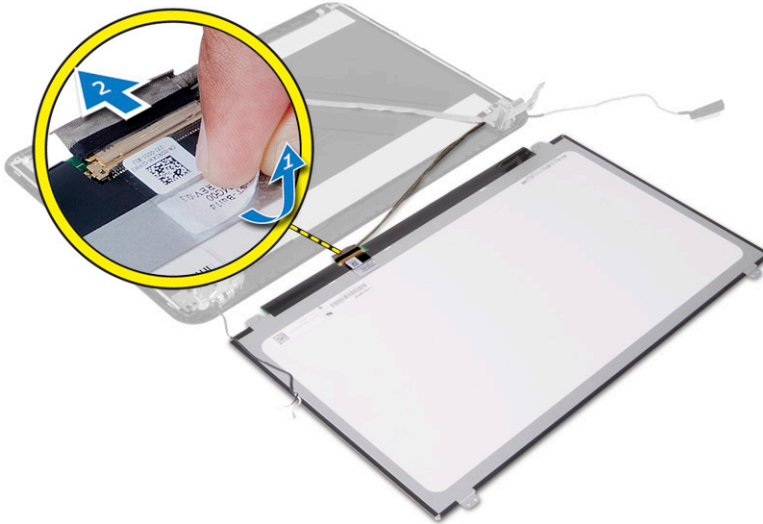
1. Align the display bezel in place and snap it in place.
2. Align the hinge covers on display assembly and snap the hinge covers on its place.
3. Install:
 - a) display assembly
 - b) system board
 - c) palmrest
 - d) keyboard
 - e) optical drive
 - f) hard drive
 - g) memory module
 - h) WLAN card
 - i) access panel
 - j) SD card
 - k) battery
4. Follow the procedures in *After Working Inside Your Computer*.

Removing the Display Panel

1. Follow the procedures in *Before Working Inside Your Computer*.
2. Remove:
 - a) battery
 - b) SD card
 - c) access panel
 - d) memory module
 - e) WLAN card
 - f) hard drive
 - g) optical drive
 - h) keyboard
 - i) palmrest
 - j) system board
 - k) display assembly
 - l) display bezel
 - m) display hinges
3. Remove the screws that secure the display panel to the display assembly. Lift the display panel and flip to access the display cable.



4. Peel the tape that secures display cable and disconnect the cable from the connector. Remove the display panel from the display assembly.



Installing the Display Panel

1. Connect the display cable to the display panel.
2. Affix the tape to secure the display cable.
3. Place the display panel on the display assembly.
4. Tighten the screws to secure the display panel to the display assembly.
5. Install:

- a) display hinges
- b) display bezel
- c) display assembly
- d) system board
- e) palmrest
- f) keyboard
- g) optical drive
- h) hard drive
- i) memory module
- j) WLAN card
- k) access panel
- l) SD card
- m) battery

6. Follow the procedures in *After Working Inside Your Computer*.

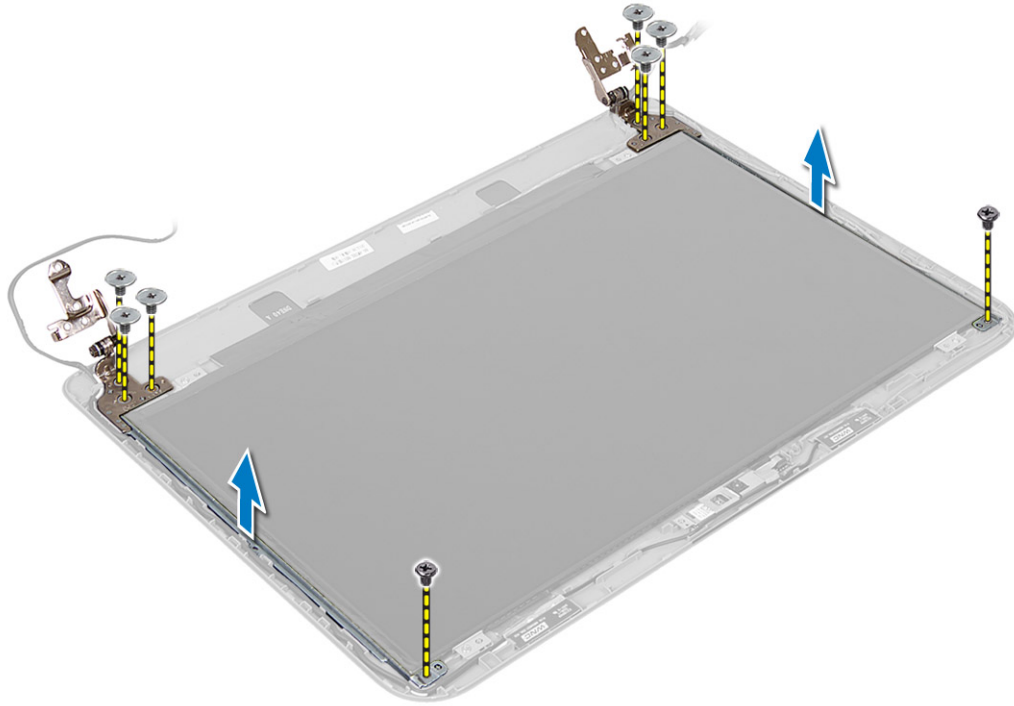
Removing the Display Hinges

1. Follow the procedures in *Before Working Inside Your Computer*.

2. Remove:

- a) battery
- b) SD card
- c) access panel
- d) memory module
- e) WLAN card
- f) hard drive
- g) optical drive
- h) keyboard
- i) palmrest
- j) system board
- k) display assembly
- l) display bezel

3. Remove the screws that secure the display hinges to the display assembly. Lift the display hinges off the display panel.



Installing the Display Hinges

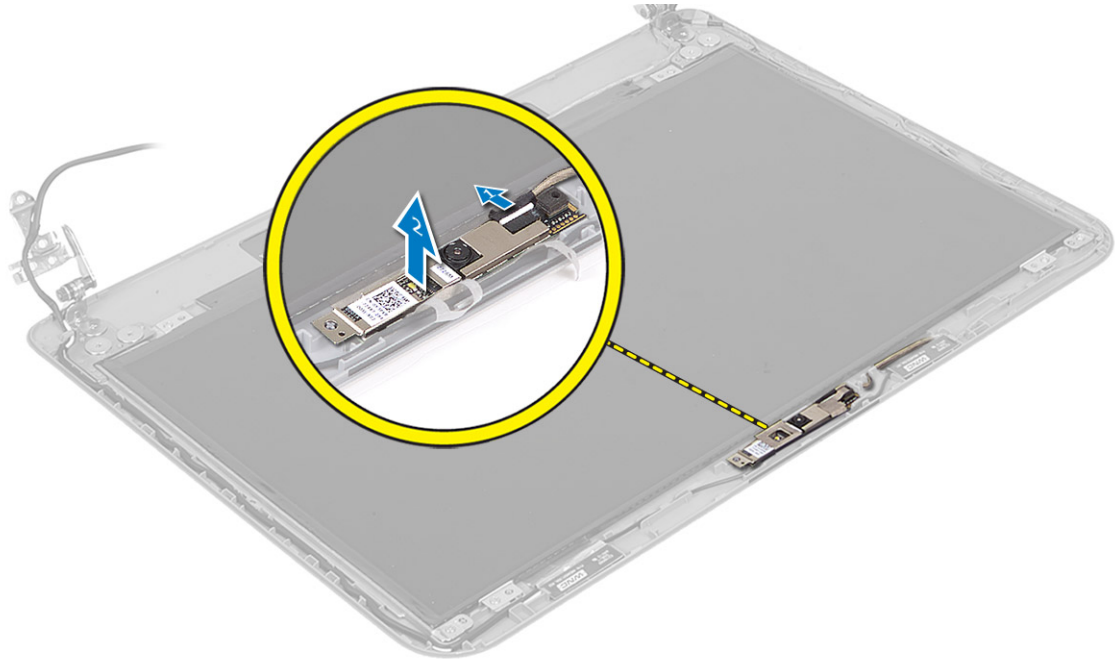
1. Place the display hinges on its place.
2. Tighten the screws to secure the display hinges to the display assembly.
3. Install:
 - a) display bezel
 - b) display assembly
 - c) system board
 - d) palmrest
 - e) keyboard
 - f) optical drive
 - g) hard drive
 - h) memory module
 - i) WLAN card
 - j) access panel
 - k) SD card
 - l) battery
4. Follow the procedures in *After Working Inside Your Computer*.

Removing the Camera Module

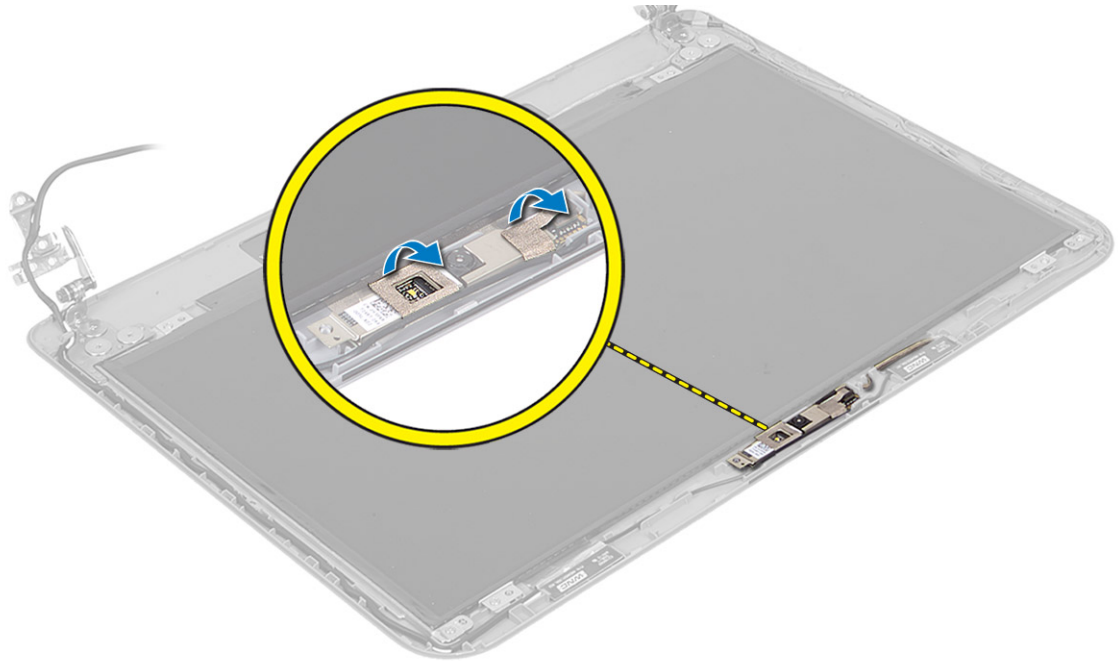
1. Follow the procedures in *Before Working Inside Your Computer*.
2. Remove:
 - a) battery
 - b) SD card

- c) access panel
- d) memory module
- e) WLAN card
- f) hard drive
- g) optical drive
- h) keyboard
- i) palmrest
- j) system board
- k) display assembly
- l) display bezel

3. Disconnect the camera cable from the connector on the camera module.



4. Lift and remove the camera from the display assembly.



Installing the Camera Module

1. Connect the camera cable to the connector on the camera module.
2. Align the camera module in its position on the computer.
3. Install:
 - a) display bezel
 - b) display assembly
 - c) system board
 - d) palmrest
 - e) keyboard
 - f) optical drive
 - g) hard drive
 - h) memory module
 - i) WLAN card
 - j) access panel
 - k) SD card
 - l) battery
4. Follow the instructions in *After Working Inside Your Computer*.

System Setup

System Setup enables you to manage your computer hardware and specify BIOS-level options. From the System Setup, you can:



- Change the NVRAM settings after you add or remove hardware
- View the system hardware configuration
- Enable or disable integrated devices
- Set performance and power management thresholds
- Manage your computer security

Boot Sequence

Boot Sequence allows you to bypass the System Setup-defined boot device order and boot directly to a specific device (for example: optical drive or hard drive). During the Power-on Self Test (POST), when the Dell logo appears, you can:

- Access System Setup by pressing <F2> key
- Bring up the one-time boot menu by pressing <F12> key

The one-time boot menu displays the devices that you can boot from including the diagnostic option. The boot-menu options are:

- Removable Drive (if available)
- STXXXX Drive
 -  **NOTE:** XXX denotes the SATA drive number.
- Optical Drive
- Diagnostics
 -  **NOTE:** Choosing Diagnostics, will display the **ePSA diagnostics** screen.

The boot sequence screen also displays the option to access the System Setup screen.

Navigation Keys

The following table displays the system setup navigation keys.




 **NOTE:** For most of the system setup options, changes that you make are recorded but do not take effect until you restart the system.

Table 1. Navigation Keys

Keys	Navigation
Up arrow	Moves to the previous field.
Down arrow	Moves to the next field.

Keys	Navigation
<Enter>	Allows you to select a value in the selected field (if applicable) or follow the link in the field.
Spacebar	Expands or collapses a drop-down list, if applicable.
<Tab>	Moves to the next focus area.
	 NOTE: For the standard graphics browser only.
<Esc>	Moves to the previous page till you view the main screen. Pressing <Esc> in the main screen displays a message that prompts you to save any unsaved changes and restarts the system.
<F1>	Displays the System Setup help file.

System Setup Options

 **NOTE:** The system setup options may vary depending on the computer model.

The Main tab lists out the primary hardware features of the computer. The table below defines the function of each option.

Table 2. Main Options

Option	Description
System Time	Allows you to reset the time on the computer's internal clock.
System Date	Allows you to reset the date on the computer's internal calendar.
BIOS Version	Displays the BIOS revision.
Product Name	Displays the product name and the model number.
Service Tag	Displays the service tag of your computer.
Asset Tag	Displays the asset tag of your computer (if available).
CPU Type	Displays the type of processor.
CPU Speed	Displays the speed of the processor.
CPU ID	Displays the processor ID.
CPU Cache	
	L1 Cache
	Displays the processor L1 cache size.
	L2 Cache
	Displays the processor L2 cache size.

Option	Description
L3 Cache	Displays the processor L3 cache size.
Fixed HDD	Displays the model number and capacity of the hard drive.
SATA ODD	Displays the model number and capacity of the optical drive.
AC Adapter Type	Displays the type of the AC adapter.
System Memory	Displays the memory installed on the computer
Extended Memory	Displays the extended memory installed on the computer.
Memory Speed	Displays the memory speed.

The Advanced tab allows you to set various functions that affect the performance of the computer. The table below defines the function of each option and its default value.

Table 3. Advance Options

Option	Description
Intel SpeedStep	Enable or disable the Intel SpeedStep feature. The default option is Enabled
Virtualization	Enable or disable the Intel Virtualization feature. The default option is Enabled
Integrated NIC	Enable or disable the power supply to the on-board network card. The default option is Enabled
USB Emulation	Enable or disable the USB emulation feature. The default option is Enabled
USB Wake Support	Allows USB devices to wake-up the computer from standby. This feature is enabled only when the AC adapter is connected. The default option is Disabled
SATA Operation	Change the SATA controller mode to either ATA or AHCI. The default option is AHCI
Adapter Warnings	Enables or disables adapter warnings. The default option is Enabled
Function Key Behavior	Specifies the behavior of the function key <Fn> . The default option is Function key first
Battery Health	Specifies the health of the battery.

Option	Description
Miscellaneous Devices	These fields let you enable or disable various on-board devices.
External USB Ports	Enables or disables external USB ports. The default option is Enabled
Microphone	Enables or disables microphone. The default option is Enabled
USB debug	Enables or disables USB debug. The default option is Disabled

The Security tab displays the security status and allows you to manage the security features of the computer.

Table 4. Security Options

Option	Description
Unlock Setup Status	Displays the status of the setup. The default option is Unlocked
Admin Password Status	Displays the status of the administrator password. The default option is Not Set
System Password Status	Displays the status of the system password. The default option is Not Set
HDD Password Status	Displays the status of the hard-drive password. The default option is Not Set
Set Admin Password	Enables to set an administrator password.
Set System Password	Enables to set a system password.
Set HDD Password	Enables to set a hard-drive password.
Password Change	Allows you to add/remove permission for changing passwords.
Computrace	Enables or disables the Computrace feature on your computer.
Secure Boot Mode	Allows you to select the secure boot mode. <ul style="list-style-type: none"> • Standard • Custom The default option is Standard

The Boot tab allows you to change the boot sequence.

Table 5. Boot Options

Option	Description
Fast Boot	Allows you to perform a fast boot to your computer. The default option is Enabled .
Secure Boot	Allows you to perform a secure boot to your computer. The default option is Enabled .
Load Legacy Option ROM	Allows you to load legacy option. The default option is Disabled
Boot List Option	Displays the boot option of the computer. The default option is UEFI
Secure Boot Mode	Allows you to boot securely. The default option is Standard



Option	Description
Restore Factory Defaults	Allows you to restore the factory defaults.
Delete all Security Boot Keys	Allows you to delete all security boot keys.
Add Boot Option	Allows you to add a boot option.
Delete Boot Option	Allows you to delete a boot option.
View Boot Option Priorities	Allows you to prioritize the system boot order.

Table 6. Exit

Option	Description
Exit Savings Changes	Allows you to exit while saving changes.
Save Change Without Exit	Allows you to save changes without exiting.
Exit Discarding Changes	Allows you to exit while discarding changes.
Load Optimal Defaults	Allows you to load optimal defaults.
Discard Changes	Allows you to discard changes.

Updating the BIOS


It is recommended to update your BIOS (system setup), on replacing the system board or if an update is available. For laptops, ensure that your computer battery is fully charged and connected to a power outlet

1. Restart the computer.
2. Go to dell.com/support.
3. If you have your computer's Service Tag or Express Service Code:
 -  **NOTE:** To locate the Service Tag, click **Where is my Service Tag?**
 -  **NOTE:** If you cannot find your Service Tag, click **Detect Service Tag**. Proceed with the instructions on screen.
4. Enter the **Service Tag** or **Express Service Code** and click **Submit**.
5. If you are unable to locate or find the Service Tag, click the Product Category of your computer.
6. Choose the **Product Type** from the list.
7. Select your computer model and the **Product Support** page of your computer appears.
8. Click **Drivers & Downloads**.
9. On the Drivers and Downloads screen, under the **Operating System** drop-down list, select **BIOS**.
10. Identify the latest BIOS file and click **Download File**.
11. Select your preferred download method in the **Please select your download method below window**; click **Download File**.
The **File Download** window appears.
12. Click **Save** to save the file on your computer.
13. Click **Run** to install the updated BIOS settings on your computer.
Follow the instructions on the screen.


System and Setup Password

You can create a system password and a setup password to secure your computer.

Password Type	Description
System password	Password that you must enter to log on to your system.
Setup password	Password that you must enter to access and make changes to the BIOS settings of your computer.


 **CAUTION:** The password features provide a basic level of security for the data on your computer.

 **CAUTION:** Anyone can access the data stored on your computer if it is not locked and left unattended.

 **NOTE:** Your computer is shipped with the system and setup password feature disabled.

Assigning a System Password and Setup Password

You can assign a new **System Password** and/or **Setup Password** or change an existing **System Password** and/or **Setup Password** only when **Password Status** is **Unlocked**. If the Password Status is **Locked**, you cannot change the System Password.

 **NOTE:** If the password jumper is disabled, the existing System Password and Setup Password is deleted and you need not provide the system password to log on to the computer.

To enter a system setup, press <F2> immediately after a power-on or reboot.


1. In the **System BIOS** or **System Setup** screen, select **System Security** and press <Enter>. The **System Security** screen appears.
 2. In the **System Security** screen, verify that **Password Status** is **Unlocked**.
 3. Select **System Password**, enter your system password, and press <Enter> or <Tab>. Use the following guidelines to assign the system password:
 - A password can have up to 32 characters.
 - The password can contain the numbers 0 through 9.
 - Only lower case letters are valid, upper case letters are not allowed.
 - Only the following special characters are allowed: space, ("), (+), (,), (-), (.), (/), (:), ([), (\), (]), (^).
- Re-enter the system password when prompted.
4. Type the system password that you entered earlier and click **OK**.
 5. Select **Setup Password**, type your system password and press <Enter> or <Tab>. A message prompts you to re-type the setup password.
 6. Type the setup password that you entered earlier and click **OK**.
 7. Press <Esc> and a message prompts you to save the changes.
 8. Press <Y> to save the changes. The computer reboots.

Deleting or Changing an Existing System and/or Setup Password

Ensure that the **Password Status** is **Unlocked** (in the System Setup) before attempting to delete or change the existing System and/or Setup password. You cannot delete or change an existing System or Setup password, if the **Password Status** is **Locked**.

To enter the System Setup, press <F2> immediately after a power-on or reboot.

1. In the **System BIOS** or **System Setup** screen, select **System Security** and press <Enter>. The **System Security** screen is displayed.
2. In the **System Security** screen, verify that **Password Status** is **Unlocked**.
3. Select **System Password**, alter or delete the existing system password and press <Enter> or <Tab>.
4. Select **Setup Password**, alter or delete the existing setup password and press <Enter> or <Tab>.

 **NOTE:** If you change the System and/or Setup password, re-enter the new password when promoted. If you delete the System and/or Setup password, confirm the deletion when promoted.

5. Press <Esc> and a message prompts you to save the changes.
6. Press <Y> to save the changes and exit from the System Setup. The computer reboots.

Diagnostics

If you experience a problem with your computer, run the ePSA diagnostics before contacting Dell for technical assistance. The purpose of running diagnostics is to test your computer's hardware without requiring additional equipment or risking data loss. If you are unable to fix the problem yourself, service and support personnel can use the diagnostics results to help you solve the problem.

Enhanced Pre-Boot System Assessment (ePSA) Diagnostics

The ePSA diagnostics (also known as system diagnostics) performs a complete check of your hardware. The ePSA is embedded with the BIOS and is launched by the BIOS internally. The embedded system diagnostics provides a set of options for particular devices or device groups allowing you to:

- Run tests automatically or in an interactive mode
- Repeat tests
- Display or save test results
- Run thorough tests to introduce additional test options to provide extra information about the failed device(s)
- View status messages that inform you if tests are completed successfully
- View error messages that inform you of problems encountered during testing



CAUTION: Use the system diagnostics to test only your computer. Using this program with other computers may cause invalid results or error messages.





NOTE: Some tests for specific devices require user interaction. Always ensure that you are present at the computer terminal when the diagnostic tests are performed.

1. Power-on the computer.
2. As the computer boots, press the <F12> key as the Dell logo appears.
3. On the boot menu screen, select the **Diagnostics** option.
The **Enhanced Pre-boot System Assessment** window is displayed, listing all devices detected in the computer. The diagnostics starts running the tests on all the detected devices.
4. If you wish to run a diagnostic test on a specific device, press <Esc> and click **Yes** to stop the diagnostic test.
5. Select the device from the left pane and click **Run Tests**.
6. If there are any issues, error codes are displayed.
Note the error code and contact Dell.

Device Status Lights

Icon	Description
	Turns on when you turn on the computer and blinks when the computer is in a power management mode.
	Turns on when the computer reads or writes data.

Icon	Description
	Turns on steadily or blinks to indicate battery charge status.
	Turns on when wireless networking is enabled.

Battery Status Lights

If the computer is connected to an electrical outlet, the battery light operates as follows:

Alternately blinking amber light and white light	An unauthenticated or unsupported non-Dell AC adapter is attached to your laptop.
Alternately blinking amber light with steady white light	Temporary battery failure with AC adapter present.
Constantly blinking amber light	Fatal battery failure with AC adapter present.
Light off	Battery in full charge mode with AC adapter present.
White light on	Battery in charge mode with AC adapter present.

Specifications



 **NOTE:** Offerings may vary by region. For more information regarding the configuration of your computer, click Start  (Start icon) → **Help and Support**, and then select the option to view information about your computer.

Table 7. System Information

Feature	Description
DRAM bus width	64 bits and 128 bits
Flash EPROM	8 MB

Table 8. Processor

Feature	Description
Type	<ul style="list-style-type: none"> • Intel Core i3 ULV (4th Generation) • Intel Core i5 ULV (4th Generation) • Intel Core i7 ULV (4th Generation)
L1 cache	64 KB
L2 cache	256 KB
L3 cache	Up to 4 MB

Table 9. Memory

Feature	Description
Memory connector	two internally accessible DDR3L connectors
Memory capacity	2 GB and 4 GB
Memory type	1600 MHz (dual channel DDR3L configuration)
Minimum memory	2 GB, 4 GB, 6 GB, and 8 GB
Maximum memory	8 GB

Table 10. Audio

Feature	Description
Type	2 channel high definition audio
Controller	Realtek ALC3223
Stereo conversion	24-bit (analog to digital and digital to analog)
Interface	Intel HDA bus

Feature	Description
Speakers	2 x 2 W
Volume controls	program menu and keyboard media-control keys

Table 11. Video

Feature	Description
Video type	Integrated on system board / discrete
Video controller:	
UMA	Intel HD Graphics 4400 (shared memory)
Discrete	
Latitude 3440	NVIDIA GeForce GT740M (2GB DDR3)
Latitude 3540	AMD Radeon HD 8850M (2GB DDR5)
Data bus:	
Latitude 3440	64 bits
Latitude 3540	128 bits

Table 12. Camera

Feature	Description
Camera resolution	0.92 megapixels
Video resolution (maximum)	1280 x 720 (HD) at 30 fps (maximum)
Diagonal viewing angle	66°

Table 13. Communication

Feature	Description
Network adapter	10/100/1000 Mbps Ethernet LAN on Motherboard (LOM)
Wireless	<ul style="list-style-type: none"> • Wi-fi 802.11 b/g/n • bluetooth 4.0

Table 14. Ports and Connectors

Feature	Description
Audio	one headphone/microphone combo port (headset)
Video	one 19-pin VGA port
Network adapter	one RJ45 port
USB:	
Latitude 3440	<ul style="list-style-type: none"> • two USB 3.0 ports (rear one with window debug)

Feature	Description
Latitude 3540	<ul style="list-style-type: none"> one USB 2.0 port two USB 3.0 ports (rear one with window debug) two USB 2.0 port
Media card reader	one 4-in-1 slot

 **NOTE:** The powered USB 3.0 connector also supports Microsoft Kernel Debugging. The ports are identified in the documentation shipped with your computer.

Table 15. Display

Feature	Latitude 3440	Latitude 3540
Type	14.0 inches HD WLED	15.6 inches HD WLED
Height	205.60 mm (8.09 inches)	344.23 mm (13.55 inches)
Width	320.90 mm (12.63 inches)	193.54 (7.61 inches)
Diagonal	355.60 mm (14.00 inches)	396.24 mm (15.60 inches)
Active area (X/Y)	309.40 mm x 173.95 mm (12.18 inches x 6.85 inches)	344.23 x 193.54 mm (13.55 inches x 7.61 inches)
Maximum resolution		1366 x 768 pixels
Maximum brightness		200 nits
Operating angle	0° (closed) to 135°	0° (closed) to 140°
Refresh rate		60 Hz
Minimum viewing angles:		
Horizontal		40°/40°
Vertical		10°/30°
Pixel pitch	0.2265 mm x 0.2265 mm	0.252 mm x 0.252 mm
External display		VGA

Table 16. Keyboard

Feature	Description
Number of keys:	
Latitude 3440	US 86, Brazil 87, UK 87 and Japan 90
Latitude 3540	US 102, Brazil 105, UK 103 and Japan 106

Table 17. Touchpad

Feature	Description
Active area:	240 dpi
X-axis	56.00 mm (2.20 inches)
Y-axis	100.00 mm (3.94 inches)

Table 18. Battery

Feature	Description
Type	<ul style="list-style-type: none"> • 4-cell “smart” lithium ion (40 WHr) • 6-cell “smart” lithium ion (65 WHr)
Dimensions:	
Height	<ul style="list-style-type: none"> • 4–cell — 20.00 mm (0.79 inch) • 6–cell — 35.40 mm (1.39 inches)
Width	46.30 mm (1.82 inches)
Depth	272.40 mm (10.72 inches)
Weight	<ul style="list-style-type: none"> • 4–cell — 260 g • 6–cell — 360 g
Life span	300 discharge/charge cycle
Voltage	<ul style="list-style-type: none"> • 14.80 VDC (4–cell) • 11.10 VDC (6–cell)
Temperature range:	
Operating	0 °C to 35 °C (32 °F to 95 °F)
Non-Operating	–40 °C to 65 °C (–40 °F to 149 °F)
Coin-cell battery	3 V CR2032 lithium ion

Table 19. AC Adapter

Feature	Description
Type	65 W and 90 W
Input voltage	100 VAC to 240 VAC
Input current (maximum)	1.50 A/1.60 A/1.70 A/2.50 A
Input frequency	50 Hz–60 Hz
Output power	65 W/90 W
Output current	3.34 A/4.62 A
Rated output voltage	19.50 VDC

Feature	Description
Temperature range:	
Operating	0 °C to 40 °C (32 °F to 104 °F)
Non-Operating	-40 °C to 70 °C (-40 °F to 158 °F)


Table 20. Physical

Physical	Latitude 3440		Latitude 3540	
	Non-Touch	Touch	Non-Touch	Touch
Height:				
with 4-cell battery	25.00 mm (0.98 inch)	27.90 mm (1.10 inches)	25.30 mm (1.00 inch)	27.85 mm (1.10 inches)
with 6-cell battery	29.60 mm (1.17 inches)	32.90 mm (1.30 inches)	31.30 mm (1.23 inches)	33.85 mm (1.33 inches)
Width	346.00 mm (13.62 inches)		376.00 mm (14.80 inches)	
Depth	245.00 mm (9.65 inches)		259.00 mm (10.20 inches)	
Weight (minimum):				
with 4-cell battery	2.00 kg (4.30 lb)	2.20 kg (4.85 lb)	2.20 kg (4.85 lb)	2.50 kg (5.51 lb)
with 6-cell battery	2.10 kg (4.60 lb)	2.35 kg (5.18 lb)	2.35 kg (5.18 lb)	2.65 kg (5.84 lb)

Table 21. Environmental

Feature	Description
Temperature:	
Operating	0 °C to 35 °C (32 °F to 95 °F)
Storage	-40 °C to 65 °C (-40 °F to 149 °F)
Relative humidity (maximum):	
Operating	10 % to 90 % (non-condensing)
Storage	10 % to 95 % (non-condensing)
Altitude (maximum):	
Operating	-15.2 m to 3048 m (-50 to 10,000 ft) 0° to 35°C
Non-Operating	-15.2 m to 10,668 m (-50 ft to 35,000 ft)
Airborne contaminant level	G1 as defined by ISA-S71.04-1985

Contacting Dell

 **NOTE:** If you do not have an active Internet connection, you can find contact information on your purchase invoice, packing slip, bill, or Dell product catalog.

Dell provides several online and telephone-based support and service options. Availability varies by country and product, and some services may not be available in your area. To contact Dell for sales, technical support, or customer service issues:

1. Visit dell.com/support
2. Select your support category.
3. Verify your country or region in the Choose a Country/Region drop-down menu at the top of page.
4. Select the appropriate service or support link based on your need.