





\* All images in this datasheet are for illustrative purposes only and may differ from the actual product.  
 \* Stand accessories differ by models, and need to be purchased separately.


## LG LED All-in-One LAEC Series

# All-in-One LED Display with webOS

 All-in-One LED Screen

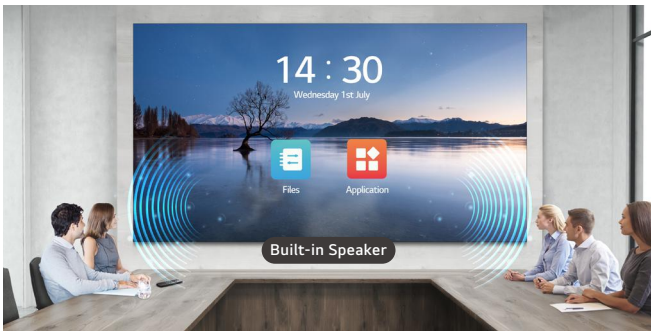
 Built-in Speaker

 Dedicated Accessories

 Easy Installation Quick Maintenance

 Compatible with **LG One:Quick|Share**

Cabinet	LAEC015	LAEC018
Inch	136"	163"
Pixel Pitch	1.56 mm	1.88 mm
Brightness	500 nit (Max., after calibration)	500 nit (Max., after calibration)
Screen Resolution	1,920 × 1,080	1,920 × 1,080
Serviceability	Front	Front
Speaker	Built-in	Built-in
Controller	Embedded	Embedded



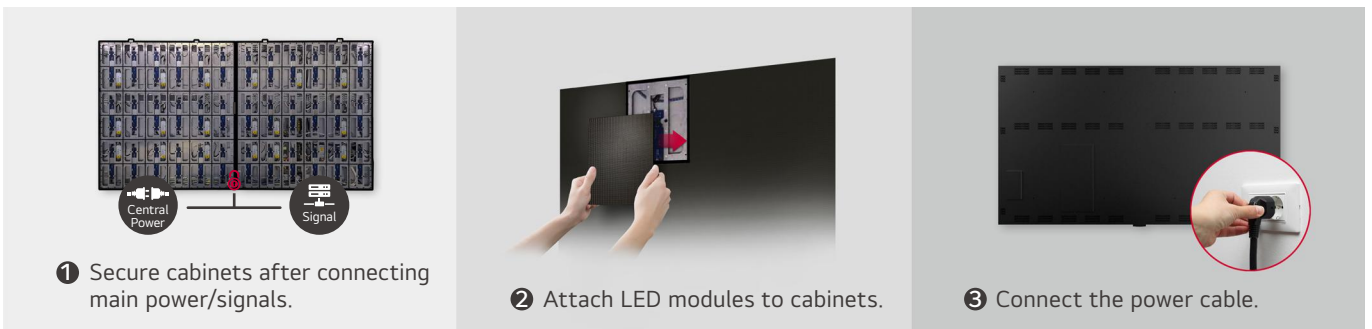
## All-in-One LED Screen with Built-in Speaker

LG's LED All-in-One LAEC series has two size of screens; 136-inch and a 163-inch. The LAEC series is offered as an all-in-one package including an embedded controller and built-in speaker. Eliminating the prejudice that LED displays are difficult and complex to install, it doesn't require controller connections or module configuration. After a simple installation process, all you need to do is to turn on the screen with a remote control like home TV.

## High Performance with webOS

Built-in Quad Core SoC (System on Chip) can execute several tasks at once for providing smooth content playback. Also, LG webOS Smart Platform enhances user convenience with intuitive GUI and provides to SI or/and developers simple app development tools\* such as SDK (Software Development Kit), SCAP, sample applications.

\* The webOS Signage Developer site (<https://webossignage.developer.lge.com>) provides SDK tools and documentation for creating apps on LG Digital Signage. This is only open to partners.

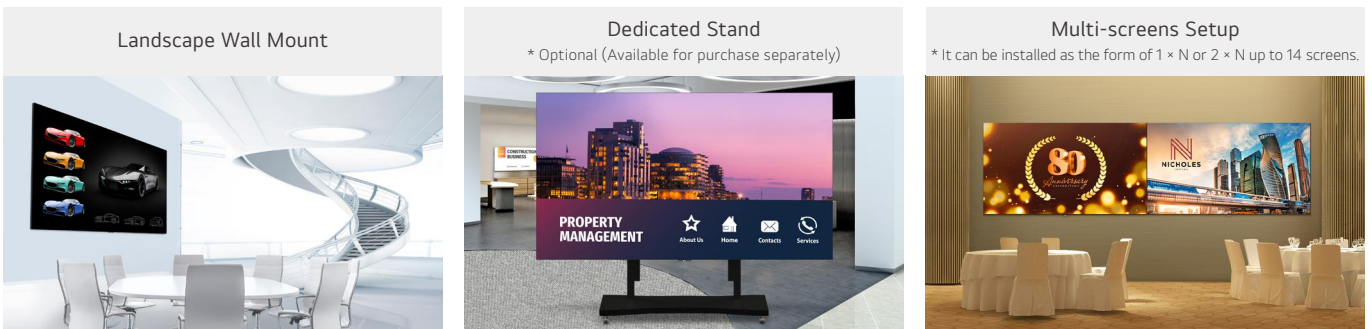


\* The image is illustrated as an example of LAEC015 model.

## Easy Installation

The installation process of the All-in-One Smart series is very simple. After securing cabinets (two for LAEC015, three for LAEC018), attach each LED display module to them. Lastly, plug in the power cable. This simple installation saves time and labor, thereby making users handle the LED screen with ease.

\* Fixing screws or installing wall mount/accessories is needed additionally.



## Versatile Installation with Dedicated Accessories

The product is offered with the necessary component including the landscape wall mount and tools for installation. The dedicated stand\* is provided as an option, so that you can easily place it depending on your installation sites. Also, the LAEC series can be installed side by side in the form of 1 × N or 2 × N, up to 14 screens, suitable for its installation site and its purposes.

\* Stand accessories differ by models, and need to be purchased separately.



## Quick Maintenance

In case of failure related to the LED module or the system board, it can be serviced from the front. The LED module can be simply detached by the provided magnetic tool and replaced quickly without cabling.

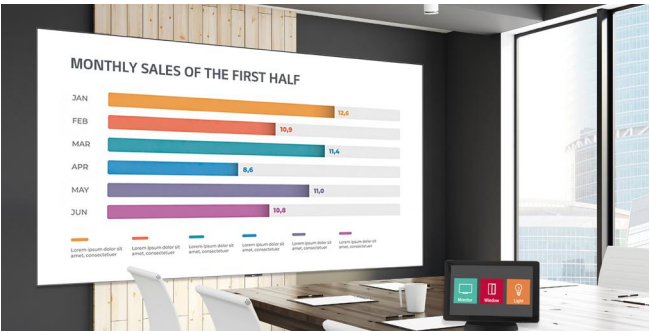


## Real-time LG ConnectedCare

Maintenance is easy and fast with the optional LG ConnectedCare\* service, a cloud service solution provided by LG. It remotely manages the status of displays in client workplaces for fault diagnosis and remote-control services, enabling the stable operation of clients' businesses.

\* The availability of LG ConnectedCare differs by region.

\*\* Stand accessories differ by models, and need to be purchased separately.



## Compatible with AV Control Systems

The LAEC series supports Crestron Connected®\* for high compatibility with professional AV controls to achieve seamless integration and automated control\*\*, boosting business management efficiency.

\* Initial setting from display is required for Crestron Connected® compatibility.

\*\* Network based control

\*\*\* Crestron Connected® needs to be purchased separately.

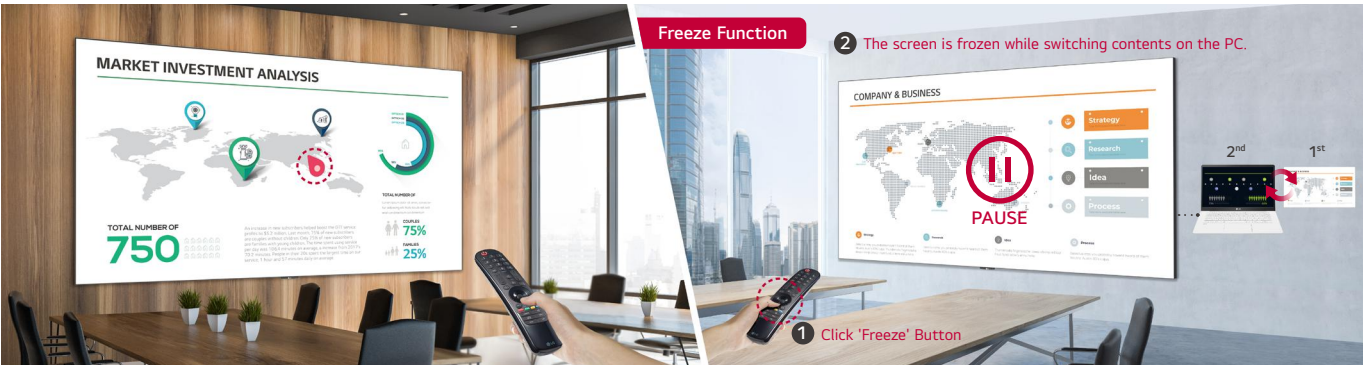


## Wireless Screen Sharing

The LAEC series is compatible with LG One:Quick Share\*, a wireless screen sharing solution. It helps to simply share one's personal PC screen to the display with its button and embedded Wi-Fi\*\*, and it can also adjust the basic setting values (volume, picture mode, auto bright, etc.) of the connected display without a remote control.

\* LG One:Quick Share needs to be purchased separately.

\*\* Users need to set up SoftAP enabled at Network Menu of the Signage.



## Magic Remote for Easy of Use

With the LG Magic Remote, you can select and run the menu of the signage just like using a mouse and its cursor can be used as a laser pointer. In addition, through the newly added 'FREEZE' button on the remote control, users can temporarily freeze the screen while switching contents on the PC, so that users are able to have uninterrupted meetings without exposing its switching process.

\* LG Magic Remote needs to be purchased separately.

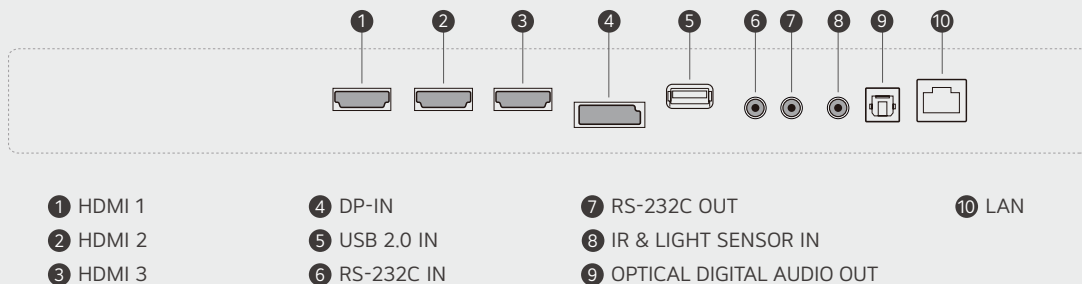
\*\* The FREEZE function is only available when the LAEC is connected to an external input signal.

## SPECIFICATIONS

	LAEC015-GN2	LAEC018-GN2	
Physical Parameters	Pixel Configuration	Single SMD	Single SMD
	Pixel Pitch (mm)	1.56	1.88
	Screen Resolution (W × H)	1,920 × 1,080	1,920 × 1,080
	Module Dimensions (W × H, mm)	250 × 281.25	300 × 168.75
	No. of Modules per Screen (W × H)	12 × 6 (Total 72)	12 × 12 (Total 144)
	Screen Dimensions (W × H × D, mm)	3,004 × 1,692 × 36.5 (Thickest 70)	3,604 × 2,029 × 45.5 (Thickest 81)
	Screen Surface Area (m <sup>2</sup> )	5.06	7.29
	Screen Weight (kg)	132	190
	Physical Pixel Density (pixels/m <sup>2</sup> )	409,600	284,444
	Flatness of Cabinet (mm)	±0.2	±0.2
	Cabinet Material	Aluminum	Aluminum
Service Access	Front	Front	
Optical Specifications	Max. Brightness (nit, after calibration)	500	500
	Color Temperature (K)	3,200 - 9,300	3,200 - 9,300
	Visual Viewing Angle (Horizontal)	160	160
	Visual Viewing Angle (Vertical)	160	160
	Brightness Uniformity	98%	98%
	Color Uniformity	±0.015 Cx, Cy	±0.015 Cx, Cy
	Contrast Ratio	3,000 : 1	3,000 : 1
Processing Depth (bit)	16 (HDR10, HDR10 Pro)	16 (HDR10, HDR10 Pro)	
Electrical Specifications	Power Consumption (W/Screen, Max.)	1,700	2,200
	Power Consumption (W/Screen, Avg.)	680	880
	Power Consumption (W/m <sup>2</sup> , Max.)	336	302
	Power Consumption (BTU/h/Screen, Max.)	5,800	7,506
	Power Consumption (BTU/h/Screen, Avg.)	2,321	3,004
	Power Consumption (BTU/h/m <sup>2</sup> , Max.)	1,146	1,030
	Power Supply (V)	100 to 240	100 to 240
	Frame Rate (Hz)	50 / 60	50 / 60
	Refresh Rate (Hz)	3,960	3,000
Operation Specifications	Lifetime (Hours to Half Brightness)	100,000	100,000
	Operating Temperature (°C)	0 to +40	0 to +40
	Operating Humidity	10-90% RH	10-90% RH
	IP Rating (Front / Rear)	IP30 / IP20	IP30 / IP20
Speaker	Built-in (9W + 9W)	Built-in (9W + 9W)	
Certification	CE, FCC, ETL, CB	CE, FCC, ETL, CB	
Environment	RoHS, REACH	RoHS, REACH	
Controller	Embedded	Embedded	

\* Specifications are subject to change without notice. Please make sure to check the product manual for details about product usage.

## CONNECTIVITY



Download  
LG C-Display+  
Mobile App  
Google Play Store

[www.lg.com/global/business/information-display](http://www.lg.com/global/business/information-display)  
[www.youtube.com/c/LGCommercialDisplay](https://www.youtube.com/c/LGCommercialDisplay)  
[www.facebook.com/LGInformationDisplay](https://www.facebook.com/LGInformationDisplay)  
[www.linkedin.com/company/lginformationdisplay](https://www.linkedin.com/company/lginformationdisplay)  
[twitter.com/LG\\_ID\\_HQ](https://twitter.com/LG_ID_HQ)

LG may make changes to specifications and product descriptions without notice. Copyright © 2023 LG Electronics Inc. All rights reserved. "LG Life's Good" is a registered trademark of LG Corp. The names of products and brands mentioned here may be the trademarks of their respective owners.